



Voters Guide General Election November 7, 2023



www.lwvpgh.org

Published by
League of Women Voters of Greater Pittsburgh
436 Seventh Avenue Suite 350
Pittsburgh, PA 15219
412-261-4284

Funding provided by
The Pittsburgh Foundation, Goldin Foundation, Eden Hall Foundation, and
individual donations to the League of Women Voters of Greater Pittsburgh

Be a Super Voter – Vote Every Time

New Pittsburgh Courier October 18-24, 2023

This Voters Guide was prepared by the League of Women Voters of Greater Pittsburgh and the League of Women Voters of Pennsylvania Citizen Education Fund. The League is a non-partisan organization and does not support or oppose any political party or candidate. Its purpose is to promote political responsibility through informed and active participation of citizens in government.

The Voters Guide listings are based entirely on material submitted by the candidates and is printed as submitted. If a questionnaire was not returned, only the candidate's name and party is listed. Every candidate was asked to submit a photograph; those received are printed.

The guide lists all candidates in the November 7, 2023 municipal election for Justice of the Pennsylvania Supreme Court, Judges of the Superior Court, Judges of the Commonwealth Court, and the Allegheny Court of Common Pleas. Also listed are candidates for the offices Allegheny County Chief Executive, District Attorney, Controller, Treasurer, and the Allegheny County Council as well as candidates for the offices of Pittsburgh City Council, Pittsburgh Treasurer and Pittsburgh School Board Director.

League of Women Voters' Guide to Municipal General Election

November 7, 2023 (Polls open from 7 AM to 8 PM)

Also listed are Magisterial candidates, ballot questions and Judges eligible for retention.

The candidates are listed as they will appear on the ballot. The party of the governor is, by practice, given the first position on the ballot in Pennsylvania.

Voting in a Primary Election

To vote in this primary election you must have been registered to vote by October 23, 2023.

Your registration is permanent if

- You did not change your address
- You did not change your name

To check your registration status go to

<https://www.pavoter-services.pa.gov/pages/voterregistrationstatus.aspx>

Identification Requirements for New Voters

If you are a new voter or if you are voting at a polling place for the first time, then you must bring your voter ID card or a photo ID such as a driver's license, student ID or some other form of Federal or State government issued ID. Some forms of non-photo ID are also acceptable such as a firearm permit, current utility bill, bank statement, paycheck, or government check. If you do not have any acceptable ID, then you must be allowed to vote by provisional ballot. If you voted in the prior election and are voting at the same polling place, you are NOT required to bring or provide identification unless your signature in the pollbook is challenged.

Mail-in and Absentee Ballots
Mail-in ballot Any qualified voter may apply for a mail-in ballot.

You may simply request this ballot type without a reason or excuse. To apply online, go to **vote.pa.gov**. Contact the county election office to request a paper application. Applications for a mail-in ballot must be received by your county election office by 5 pm on October 31, 2023. Completed mail-in ballots must be received by the Elections Division by 8 pm on Tuesday November 7, 2023 to be counted (not postmarked by November 7 as postmark does not matter).

Absentee ballot If you plan to be out of the municipality on election day or if you have a disability or illness that prevents you from going to your polling place on election day, you can simply use this ballot type, which still requires you to list a reason for your ballot request. Registered voters

who are ill, disabled, or will be absent from the municipality on Election Day may vote by absentee ballot. Completed APPLICATIONS for absentee ballots for the November 7, 2023 municipal election must be received by the Elections Division by 5 p.m. on Tuesday, October 31, 2023. Completed absentee ballots must be received by the Elections Division by 8 pm on Tuesday, November 7, 2023 to be counted (not postmarked by November 7).

Write-in Voting

Voters using absentee/mail-in ballots can also write-in names to vote for people not listed on the ballot. In addition to writing in a name, you must also fill the oval next to the written-in name.

Election Day Problems

If your right to vote is challenged at the polls on Election Day and the problem cannot be resolved at the polling place, the Judge of Elections at the polling place should telephone the county Board of Elections. The problem could be resolved by phone if your name appears on the county records. If it does not and you want to try to resolve the problem, then you can go in person to the county Board of Elections where a judge from the Court of Common Pleas will be on duty to resolve election problems. Alternatively, you can ask for and vote by provisional ballot. If it is later determined that you were eligible to vote, your ballot will be counted. You will be given instructions on how to determine if your vote was counted.

If you have any questions or need to report any problems, call the Election Protection hotline at 1-866-687-8683 or the Allegheny County Elections Division at 412-350-4500.

Voters Guide on the Internet

This Voters Guide and other useful information for voters can be found on the League's web site at <https://lwvpgh.org> or can be found by going to www.vote411.org and typing in your address and zip code.

When there's a vacuum in our democracy, when we don't vote, when we take our basic rights and freedoms for granted, when we turn away and stop paying attention and stop engaging and stop believing and look for the newest diversion, ... then other voices fill the void. A politics of fear and resentment and retrenchment takes hold.

- Barack Obama, Former U.S. President



Pennsylvania State Judicial Races

November 7, 2023 General election

Pennsylvania Justice of the Supreme Court

Description of office: The Supreme Court of Pennsylvania is the highest court in the Commonwealth and the oldest appellate court in the nation. The Supreme Court’s administrative powers and jurisdictional responsibilities are vested with the seven-member court by the Pennsylvania State Constitution and a collection of statutes known as the Judicial Code. The justice with the longest continuous service on the Supreme Court automatically becomes Chief Justice. Administratively, the courts within the Unified Judicial System are largely responsible for organizing their own staff and dockets; however, the Supreme Court has several committees and boards responsible for writing and enforcing rules for judges, attorneys, and litigants to ensure an efficient and fair judicial review. Annually, the seven justices receive over 3,000 requests for appellate review.

Term: 10 years **Salary:** \$244,793

You can view the PA Bar Association’s non-partisan judicial rating for these candidates here: pavotesmart.com/current-judicial-ratings

Democratic

(Vote for ONE)

Daniel McCaffery

Biographical Info:
County: Philadelphia
Occupation: Judge of the Pennsylvania Superior Court
Education: Temple University School of Law, J.D., 1991 Temple University, SCAT, B.A., 1988 Father Judge High School, 1982
Qualifications: 32 years as an attorney, trial and appellate court judge, tried more cases and presided over more litigation than any other candidate. Highly Recommended by the PA Bar, the only Veteran on PA’s Appellate Courts. Judge, Court of Judicial Discipline, supervising judge for PA wiretap applications.
Campaign Website: <http://www.judgemccaffery.com>
Campaign Facebook URL: <http://www.facebook.com/McCafferyforsupremecourt>
Twitter Handle: twitter.com/judgemccaffery
Campaign Instagram URL: <http://www.instagram/judgemccaffery>



DANIEL MCCAFFERY

Questions:
Q: Pennsylvania’s three co-equal branches of government—Executive, Legislative, and Judicial—each act as a check on the power of the others. In practical terms, what does this relationship of checks and balances mean to you?

A: In its most general terms, as it pertains to the question, the court has a duty to ensure the Constitutional rights of the people are appropriately applied and protected. I would describe my approach to constitutional interpretation as “Living Constitution” – meaning that the constitution was intentionally drafted using broad language to allow its concepts to evolve with changing societal conditions. As to my approach to interpreting rules, legislation & statutes, I would describe myself as a textualist in that I attempt to give a common sense meaning and will give the intent to apply a reasonable analysis to interpret any ambiguous word or provision.
Q: What criteria would you consider in deciding a case that could affect long standing precedent?
A: Every case must be considered based on the facts of the individual case, the laws pertaining to the case and were the appropriate Constitutional rights and protections fairly applied to the people and case in question.

Republican

Carolyn Carluccio

Biographical Info:
County: Montgomery
Occupation: Court of Common Pleas Judge
Education: Dickinson College, Widener University School of Law
Qualifications: First female President Judge of the Montgomery County Court of Common Pleas serving in the Criminal, Family, and Civil Court Benches. Montgomery County Chief Deputy Solicitor, Director of Human Resources, Chief Public Defender, Assistant United States Attorney.
Campaign Website: <http://www.judgecarluccio.com>
Campaign Facebook URL: <http://www.facebook.com/judgecarluccioforsupremecourt>
Twitter Handle: twitter.com/JudgeCarluccio
Campaign Instagram URL: <http://www.instagram.com/judgecarluccioforsupremecourt/>



CAROLYN CARLUCCIO

Questions:
Q: Pennsylvania’s three co-equal branches of government—Executive, Legislative, and Judicial—each act as a check on the power of the others. In practical terms, what does this relationship of checks and balances mean to you?
A: Our system of checks and balances is vital to our democracy and should be carefully guarded. We must ensure one branch does not overstep its authority. For the Executive Branch, it could be excessive Executive Orders which can circumvent Legislative powers. For the Judiciary, it is legislating from the bench which can also circumvent Legislative powers. The Judiciary also has the duty of ensuring that Legislative and Executive actions do not overstep their constitutional roles. It’s critical that the Judiciary only applies the law as it is written in the Pennsylvania and United States Constitutions. Inappropriate actions taken by the Executive branch and even the Judiciary takes power from our legislature which is closest to the people.
Q: What criteria would you consider in deciding a case that could affect long standing precedent?
A: In deciding a case that could affect long-standing precedent, just as in any case that comes before me, I will apply the law as it is written in the constitution. Justices of the Pennsylvania Supreme Court must not

allow themselves to be swayed by the media, Executive or Legislative branches, and certainly not by the popular opinion of the day. Even our own personal beliefs must be tempered to ensure that the Judiciary remains unbiased and only make rulings based on the law.

Pennsylvania Judge of the Superior Court

Description of office: The Superior Court is one of Pennsylvania’s two statewide intermediate appellate courts. This court, established in 1895, reviews most of the civil and criminal cases that are appealed from the Courts of Common Pleas in the Commonwealth’s 67 counties. The Superior Court consists of 15 judges. The president judge is elected to a five-year term by his/ her colleagues. A large number of appeals flow to the Superior Court from the trial courts. Generally, appeals are heard by panels of three judges sitting in Philadelphia, Harrisburg, or Pittsburgh. The court often is the final arbiter of legal disputes. Although the Supreme Court may grant a petition for review of a Superior Court decision, most petitions are denied, and the ruling of the Superior Court stands.

Term: 10 years **Salary:** \$230,974

Democratic

(Vote for no more than TWO)

Jill Beck

Biographical Info:
County: Allegheny
Occupation: Commercial litigator & appellate attorney
Education: B.A. in Criminal Justice—The George Washington University (cum laude graduate); J.D.—Duquesne University School of Law (cum laude graduate)
Qualifications: Jill has practiced in every area the Superior Court hears, has practiced in the Superior Court & appellate courts across the country, and spent 10 years on the other side of the bench as a law clerk—6 on the Superior Court, 4 on the Supreme Court—where she drafted over 500 decisions.
Campaign Website: <http://www.JillBeck.com>
Campaign Facebook URL: <http://www.facebook.com/electjillbeck>
Twitter Handle: twitter.com/electjillbeck
Campaign Instagram URL: <http://www.instagram.com/electjillbeck>



JILL BECK

Questions:
Q: Pennsylvania’s three co-equal branches of government—Executive, Legislative, and Judicial—each act as a check on the power of the others. In practical terms, what does this relationship of checks and balances mean to you?
A: The judiciary is a separate but coequal branch of government. It is not the role of the Court to legislate, but neither is it permissible for the Court to serve as a rubber stamp for the legislative and executive branches of

government (or the courts below). Appropriate deference to these bodies must be given when reviewing & interpreting their work, but it is solely in the Court's purview to determine the constitutionality of the measures taken and the legal correctness of their actions. The Court serves a critical role of interpreting our statutes and our constitutions (federal and state), which must be viewed in terms of the intent of the drafters at the time of their passage as well as the evolving standards of decency of our society.

Q: What criteria would you consider in deciding a case that could affect long standing precedent?

A: The decision to overrule precedent, particularly long-standing precedent, should not be taken lightly. Factors to consider include, but are not limited to, the correctness of the prior reasoning, its consistency with related precedent, changes in the law & society subsequent to the decision, & the level of reliance on the precedent by the legal system and the public.

Timika Lane

Biographical Info:

County: Philadelphia

Occupation: Judge

Education: Howard University—Bachelor of Arts, Rutgers Law School - Doctor of Law (JD)

Qualifications: Elected in 2013 to the Philadelphia Court of Common Pleas and immediately assigned to one of the busiest trial divisions in Pennsylvania. Judge Lane has presided over thousands of jury and bench trials and authored over 100 judicial opinions. She currently serves in the civil division.

Campaign Website: <http://www.judgelaneforpa.com/>
Campaign Facebook URL: <http://www.facebook.com/LaneforSuperiorCourt>

Twitter Handle: twitter.com/JudgeLaneforPA

Campaign Instagram URL: <http://www.instagram.com/laneforsuperiorcourt/>

Questions:

Q: Pennsylvania's three co-equal branches of government—Executive, Legislative, and Judicial—each act as a check on the power of the others. In practical terms, what does this relationship of checks and balances mean to you?

A: Checks and balances are an integral part of our government, essential to ensuring that no one branch can overpower its boundaries. The role of the Judicial branch ensures that the legislative and executive branches maintain constitutional rights within the law, furthering that justice be equally, effectively and lawfully maintained and upheld. In short, checks and balances are critical to a functioning government and must be maintained.

Q: What criteria would you consider in deciding a case that could affect long standing precedent?

A: Presiding a case in which in theory could affect a long-standing precedent must be weighted carefully and with respect to the past precedent. Long standing precedents are not without fault, and throughout history the judicial system has seen changes occur to long standing precedents for better and for worse. It is through this evolution, as society changes and laws are adapted to those changes that consideration of both the changes in the legal system and society should be considered, as well as aforementioned respect to the long standing precedent and whether its reasoning still stands solid within the judicial and societal systems.



TAMIKA LANE

Republican

Maria Battista

Biographical Info:

County: Clarion

Occupation: Attorney/Executive

Education: Clarion University, B.S.; Westminster College, M.Ed.; Ohio Northern University, J.D.; University of Pittsburgh, Ed.D.

Qualifications: 15+ years experience in Civil, Criminal and Administrative Law; Former Assistant District Attorney; Former Attorney with the Governor Corbett Administration; Served as an Administrative Hearing Officer where I presided over hundreds of hearings and issued hundreds of administrative decisions.

Campaign Website: <http://www.BattistaForJudge.com>

Campaign Facebook URL: <http://Facebook.com/BattistaForJudge>

Questions:

Q: Pennsylvania's three co-equal branches of government—Executive, Legislative, and Judicial—each act as a check on the power of the others. In practical terms, what does this relationship of checks and balances mean to you?

A: The Framers' purpose in dividing power between the three branches of government was to ensure that no branch of government became too powerful. James Madison's wisdom in Federalist 51 was to create a check against the authority of a single branch of government, sharing the decision-making power of the new federal government. For Pennsylvania, this model of separation of powers has created its own form of checks and balances between our three co-equal branches. In practical terms, this has empowered the courts, particularly the appellate courts, to better protect the rights of the people of this Commonwealth. By serving as a check against the executive and legislative branches, the judiciary serves to safeguard against abuses by either.

Q: What criteria would you consider in deciding a case that could affect long standing precedent?

A: Stare decisis, a Latin term which means "let the decision stand," or "to stand by things decided," is a central tenet of the American legal system. This doctrine highlights the importance of precedent in our legal tradition. Applying precedent to the particular facts of a case is a way to provide predictability and consistency in the law. While I cannot speak directly about how I would rule in any case that may appear before me, precedent may be used as a guide, as well as the law as it has been written and the particular facts of a case. In some instances, the issue of constitutionality may be raised by the parties.



MARIA BATTISTA

Questions:

Q: Pennsylvania's three co-equal branches of government—Executive, Legislative, and Judicial—each act as a check on the power of the others. In practical terms, what does this relationship of checks and balances mean to you?

A: The Founders' in their wisdom established a system of checks and balances as an attempt to ensure that no branch of our government could have unbounded power. Our system is based on the freedom of our people and these checks and balances ensure that it is difficult to pass laws or regulations that can curtail that freedom. Our constitution is our guiding light and any branch that strays from that document can be quickly put in line with it by another branch. It is the judiciary's role, as the only branch to not face regular election, to ensure that the constitution is being adhered to by intermediary courts and by the the legislative and executive branches.

Q: What criteria would you consider in deciding a case that could affect long standing precedent?

A: My guiding principle when deciding a case is the text of the constitution and the intent of a statute when applying that statute in the course of a case. Precedent or stare decisis is critical in this review. Stare Decisis is critical in providing predictability and stability to the courts. I leave open the possibility that a court must at times correct previous encroachments by the judiciary relative to constitutional review and deviation of the facts. I believe it is a heavy burden to demonstrate such encroachments when weighing prior precedents.



HARRY F. SMAIL, JR.

Pennsylvania Judge of the Commonwealth Court

Description of office: The Commonwealth Court is one of Pennsylvania's two statewide intermediate appellate courts. This court, established in 1968, is unlike any other state court in the nation. Its jurisdiction generally is limited to legal matters involving state and local government and regulatory agencies. Litigation typically focuses on subjects such as banking, insurance, utility regulation, and laws affecting taxation, land use, elections, labor practices, and workers compensation. The Commonwealth Court also acts as a court of original jurisdiction, or a trial court, when lawsuits are filed by or against the Commonwealth. The Commonwealth Court is made up of nine judges. The president judge is elected to a five-year term by his/her colleagues. Generally, appeals are heard by panels of three judges sitting in Philadelphia, Harrisburg, or Pittsburgh.

Term: 10 years

Salary: \$230,974

(Vote for ONE)

Democratic

(Vote for One)

Harry F. Smail, Jr.

Biographical Info:

County: Westmoreland

Occupation: Judge

Education: Grove City College Class of 1988 Duquesne School of Law Night School Class of 1997

Qualifications: 14 years as a practicing attorney and nearly 9 years as sitting judge in Westmoreland County

Campaign Website: <http://www.VoteJudgeSmail.com>

Matt Wolf

Biographical Info:

County: Philadelphia

Occupation: Judge

Education: B.S. Political Science, LeMoyné College, J.D., Loyola University School of Law, numerous judicial education training courses.

Qualifications: The only sitting judge in the race. 25 years of civil rights trial experience. 5 years plus of judicial experience, with a majority of that as a Supervising Judge. 20 years of military experience, 17 as an Army JAG, awarded Bronze Star Medal, service in Iraq and Afghanistan.

Campaign Website: <http://www.judgemattwolf.com>

Campaign Facebook URL: <http://www.judgemattwolf.com>

Twitter Handle: twitter.com/judgemattwolf



MATT WOLF

Questions:

Q: Pennsylvania's three co-equal branches of government— Executive, Legislative, and Judicial—each act as a check on the power of the others. In practical terms, what does this relationship of checks and balances mean to you?

A: The rule of law. Each branch of government serves as a check on the others. Legislatures pass laws, sometimes in reaction to judicial decisions and executive actions. Courts interpret the law and the facts and the Executive essentially carries out the functions of the government, subject to the laws as interpreted by the Courts. People who serve as elected officials usually take an oath of office to uphold the laws and the state and federal constitutions. I take such oaths seriously and would commit to upholding the law, as should each member of the other branches of government.

Q: What criteria would you consider in deciding a case that could affect long standing precedent?

A: It depends on the case, the facts and the law. This question cannot be answered in vacuum. There are antiquated decisions in Common Law that are long standing precedent which call to be overturned such as the Supreme Court's 1896 Plessy v. Ferguson decision which upheld the legality of racial segregation in America. It took 58 years for that case to be overturned in Brown v. Board of Education of Topeka. Some long standing precedent should be overturned such as the "separate but equal" line of cases as an example. Other long standing precedent should be respected, particularly as it relates to the preservation and recognition of fundamental constitutional rights.

Republican

Megan Martin

Biographical Info:

County: Cumberland

Occupation: Attorney

Education: JURIS DOCTOR, May 1994, Widener University School of Law, Harrisburg, PA; BACHELOR OF ARTS, June 1991, University of Delaware, Newark, DE

Qualifications: Megan has served in all 3 branches of our state government & as an attorney for the US Navy, where she was both a litigator & transactional attorney. Megan has received endorsements from law enforcement, business & labor groups, along with the PAGOP & is recommended by the PA Bar Association.

Campaign Website: <http://meganmartinforpa.com/>

Campaign Facebook URL: <http://www.facebook.com/MeganMartinforPA/>

Campaign Instagram

URL: <http://www.instagram.com/meganmartinforpa/>

Questions:

Q: Pennsylvania's three co-equal branches of government—Executive, Legislative, and Judicial—each act as a check on the power of the others. In practical terms, what does this relationship of checks and balances mean to you?

A: I respect the very different yet equally important roles of the three branches. When it comes to our judges, the people deserve to have judges who are fair & impartial, respect & defend the rule of law, protect our Constitutional rights & freedoms, apply the law as it was written by our General Assembly, & who hold government accountable because government must follow the law, too. Our judges must be exemplary public servants who act in the public's interest, not to further any political agenda or their own personal agenda. Judges must not make policy decisions from the bench that are reserved for our elected representatives to make. We need our judges to be independent as our Constitution created them to be. I will be that judge.

Q: What criteria would you consider in deciding a case that could affect long standing precedent?

A: Judges should approach every case keeping in mind their oath to support, obey & defend the Constitution. The Constitution should be their North Star. Judges should apply the law as it was written by the General Assembly. Judges should not be influenced by public opinion or pressure; they should follow the law. Precedent exists to maintain the rule of law. Defending the rule of law helps promote a world without chaos. It gives consistency to our judicial decision-making process. It ensures that individuals in similar situations are treated alike rather than being subject to the personal views of a particular judge. I respect the Constitution & rule of law. I respect precedent. I will continue to do so as a judge on our Commonwealth Court.

PA SUPERIOR COURT JUDICIAL RETENTION ELECTIONS

The PA Bar Association's non-partisan ratings and information for incumbent judges are available at pavotesmart.com/current-judicial-ratings/

Official Judicial Retention

According to www.pacourts.us: Retention is a nonpolitical method of reelecting Pennsylvania judges and is intended to be politically neutral and does not require judges to engage in campaigning against other candidates. Retention is specifically designed to keep judges out of the political fray while at the same time holding them accountable to the voters based on their overall records and performance in office. The intent is to provide a fair and nonpartisan way for the public to judge its judges. The names of the candidates are listed at the end of the ballot, apart from other offices. No political affiliation is listed for retention candidates

SUPERIOR COURT

Shall Jack Panella be retained for an additional term as Judge of the Superior Court of the Commonwealth of Pennsylvania?

Yes _____ No _____



MEGAN MARTIN

Shall Victor P. Stabile be retained for an additional term as Judge of the Superior Court of the Commonwealth of Pennsylvania?

Yes _____ No _____

Judge of the Court of Common Pleas

Race: Judge of the Court of Common Pleas

Description: The Court of Common Pleas is primarily a trial court. There are four divisions of the Court of Common Pleas: Civil, Criminal, Orphans', and Family. The judges can be assigned from one division to another as needed. Judges can run on both the Republican and Democratic tickets.

Term: 10 years

Salary: \$212,495

Republican

(Vote for One)

Anthony DeLuca

Party: Rep

Campaign Phone: (412) 401-6963

Campaign Email: DeLucaforJudge2023@gmail.com

Campaign Web Site: DeLuca4Judge.com

Education: University of Pittsburgh School of Law, Magna Cum Laude, JD 1997, Boston College, BA 1994

Qualifications for office:

Highly Recommended by the Allegheny County Bar Association, Implemented and Developed Mental Health Court in Allegheny County, Pro Bono Work with Individuals with Mental Health Struggles in the Criminal Justice System, Union Labor Lawyer - would be the only one serving on the court, tried hundred of cases in the court

Facebook: <https://www.facebook.com/anthonydelucaforjudge/>

Twitter: <https://twitter.com/delucaforjudge>

Questions:

Q: Is gun violence best addressed as a public health and public safety issue or as a law enforcement issue?

A: Gun violence is clearly a public health issue. The way to stop gun violence is to provide abundant mental health resources to those in need concurrent with outreach to find the people who need those resources. Additionally, as a Democrat I believe that economic opportunity for all people would also reduce gun violence. However, until society provides those resources and opportunities, law enforcement must still be involved in the process of removing guns from those that mean others harm. Regardless of personal beliefs, I would always rule fairly based upon the facts and the law.

Q: Describe your legal experience in the Civil, Criminal, Family and Orphans Division and why these qualify you to be a judge?

A: I am proud of my diverse career. I have practiced in all areas of the Allegheny County Courts. I have served as an attorney in the Criminal Courts for over twenty years. During that time I have tried hundreds of cases and worked on building Mental Health Court. In the Family Courts I have worked extensively on delinquency matters. In the Civil Courts I have served as a Union Labor Lawyer and plaintiff's lawyer on numerous cases. Finally, I have handled estate matters, and guardianship proceedings in Orphans Court. No other candidate has my broad experience.



ANTHONY DELUCA

Democratic

Patrick A. Sweeney

Party: Dem
Campaign Phone: (412) 867-0671
Campaign Email: patricksweeneyforjudge@gmail.com
Campaign Web Site: patricksweeneyforjudge.com
Education: JD, University of Pittsburgh School of Law, 1996; BA, University of Pittsburgh, 1992
Qualifications for office: 25 years as a public defender. Experience in all four divisions of the Court of Common Pleas. Recommended by the Allegheny Bar. Endorsed by the Democratic Party of Allegheny County.
Facebook: facebook.com/PatrickSweeneyforJudge
campaignwebsite: <https://patricksweeneyforjudge.com>



PATRICK A. SWEENEY

Questions:
Q: Is gun violence best addressed as a public health and public safety issue or as a law enforcement issue?

A: I believe gun violence is too complex to fashion a simple policy response that does not include both a law enforcement AND public health component. For law enforcement, those convicted of committing violent acts – particularly with firearms – must be dealt with appropriately by the courts. For public health, those of us working in the criminal justice system have been calling for expanded treatment opportunities not only for those ensnared in the criminal and juvenile justice system, but for society writ large. Too often we read of violent crimes committed by those with mental health episodes.
Q: Describe your legal experience in the Civil, Criminal, Family and Orphans Division and why these qualify you to be a judge?

A: Through my work in the Public Defender's office, I have appeared in every division of the Court of Common Pleas. My experience includes dozens of Jury trials, hundreds of non-jury trials, and I have counseled thousands of clients. Further, I have handled every type of case imaginable from shoplifting to Homicide. This extensive and varied set of experiences gives me a unique degree of preparation for the bench above and beyond my opponents. I have seen the worst and best of the justice system in the Public Defender's Office. I know where we need reform, and I have seen how good judges act.

County Chief Executive

Description: The County Executive enforces all County ordinances, represents the County in meetings with other elected officials and development organizations, approves or rejects County ordinances, is accountable for all departments except those under jurisdiction of another officer, prepares and submits fiscal plans, appoints the County Manager (with consent of Council), makes appointments to authorities and agencies, negotiates and signs contracts, calls special meetings of Council, makes an annual report to Council and other reports as Council may request.

Term: 4 years

Salary: \$ 142,339

Democratic

Sara Innamorato

Party: Dem
Campaign Phone: (443) 567-8990
Campaign Email: hello@saraforall.com
Campaign Web Site: saraforall.com
Education: University of Pittsburgh, Bachelors in Business, Magna Cum Laude
Qualifications for office: Sara has introduced dozens of bills, leading the fight to increase the supply of affordable housing, raise the minimum wage, secure environmental protections, address the opioid epidemic, establish the first Office of New Pennsylvanians, create a Working Families Tax Credit, and protect reproductive healthcare. The 2022 session culminated with the passage of Sara's landmark Whole Home Repairs legislation which will provide \$125M in critical funding to keep seniors and those facing housing insecurity in their homes while investing in climate resilience and local workforce development.
Facebook: <https://www.facebook.com/SaraForPA>
Twitter: <https://twitter.com/Innamo>



SARA INNAMORATO

Questions:
Q: What are your top three priorities for this office?

A: The County Exec holds power over many issues that touch people's lives and either create a foundation for shared wealth or reinforce disparity. My top priorities are (1) to ensure that everyone in Allegheny County has high-quality, safe, and affordable housing; (2) to build the tax base that values our working families and helps us shift to a clean economy; and (3) to improve our air and water quality, with a particular focus on our environmental justice communities. These three issues would address deep inequities in our county, build shared prosperity, and improve the lives of all residents.

Q: What policies will you pursue to promote social and racial justice for all citizens?

A: We cannot look at racial justice as an isolated issue — we need to address these issues in every aspect of County Government. Our work must focus on closing the racial wealth gap; addressing the Black infant and maternal mortality; reducing racial segregation of housing; cleaning up our air/water — starting EJ communities; expanding union rights; ending the racial imbalance in property tax assessments, home valuations, and mortgage lending; and reforming our criminal justice system to end the abuses at the Allegheny County Jail and breaking the school to prison pipeline.

Q: The renewable energy industry is providing a significant increase in good jobs in PA. If elected, how will you use your elected position to continue this economic growth?

A: A Just Transition requires that we reorient the economic development infrastructure of Allegheny County away from the large polluting industries towards a distributed set of emerging clean industries. Many of these industries are already in Allegheny County, but they haven't received the support from the government that polluting industries have. Until we change how federal and state money flows into our county and which industries are prioritized, we cannot ensure a meaningful transition.

Our existing jobs in the service and care sectors are the fastest-growing job sectors here yet have the fewest job protections and some of the lowest wages. These sectors are just

as important as what we traditionally view as “green” jobs. They are deeply important to quality of life, and they heavily employ Black and Brown workers – especially women of color. Raising the wage and making these good, family-sustaining jobs is just as important a part of a Just Transition.

Republican

Joseph E. Rockey

Party: Rep
Campaign Phone: (412) 855-2676
Campaign Email: info@voterockey.com
Campaign Web Site: www.voterockey.com
Education: Bachelor of Science, Duquesne University
Qualifications for office: Lifetime of private sector business experience, including chief risk officer for fifth-largest U.S. financial institution, as well as board memberships with several social service organizations.
Facebook: <https://www.facebook.com/profile.php?id=100089118441204>



JOSEPH E. ROCKEY

Questions:
Q: What are your top three priorities for this office?

A: To bring commonsense solutions to the financial and economic challenges that have cost Allegheny County jobs over the past five years. To encourage economic growth by encouraging new and existing businesses and industries to make their home in Allegheny County. To address the growing problems of crime and homelessness by efficiently delivering public services while providing the kinds of family-sustaining jobs needed to encourage productive citizenship.

Q: What policies will you pursue to promote social and racial justice for all citizens?

A: A vibrant, private-sector economy with good jobs becomes the foundation for equity and inclusion. Allegheny County's Black middle class is shockingly small and without economic advancement, minority communities cannot advance -- the greatest injustice of all. A Rockey administration will focus economic investment into communities that have historically been left behind.

Q: The renewable energy industry is providing a significant increase in good jobs in PA. If elected, how will you use your elected position to continue this economic growth?

A: A Joe Rockey administration would favor an “all-of-the-above” menu of energy options. I support the continuation and expansion of renewable energy in Allegheny County and the jobs that it creates. During a Rockey administration, we will continue to invest in the expansion of renewable energy in the county and beyond.

District Attorney

Description: Prosecutes all criminal cases in Court of Common Pleas. Prepares criminal information, requests and conducts investigative grand juries, prepares cases for court.

Term of office: 4 years

Salary: \$196,119

Democratic

Matt Dugan

Party: Dem
Campaign Phone: (443) 742-3093
Campaign Email: info@du-ganforda.com
Campaign Web Site: www.duganforda.com
Education: Matt is a gradu-ate of the Duquesne Univer-sity School of Law where he received the CALI Award for excellence in Trial Advocacy and earned his bachelor's degree from Villanova Uni-versity.
Qualifications for office: Matt Dugan was appointed Chief Public Defender of Allegheny County in Jan 2020 after serving as Acting Chief Public Defender since May 2019. Mr. Dugan began his career with the Public Defender's Of-fice in 2007 as a trial attorney. In 2013 he was promoted to the position of trial manager & became Deputy of the Pre-Trial Division in 2016. Beginning in 2018 he assumed the role of Chief Deputy Director. Matt has spent his career in the Public Defender's Office & has implemented several transformational projects cementing that office's leadership role in criminal justice reform in Allegheny County.
Facebook: <https://www.facebook.com/DuganforDA>
Twitter: <https://twitter.com/MattDugan4DA>
District: Allegheny County



MATT DUGAN

Questions:
Q: What are your top three priorities for this office?
A: 1) establish a conviction integrity unit 2) develop a ro-bust training program for attorneys and staff 3) put more people into true diversionary programs
Q: What policies will you pursue to promote social and racial justice for all citizens?
A: The District Attorney's Office must acknowledge the significant racial disparities in our criminal justice system, and must actively work to eradicate those disparities with every decision and policy it implements. We must build a system that works for all members of our community.
Q: What policy changes would you recommend to im-prove police accountability?
A: There must be an open dialogue between the DA's office & every police dept in the County. Police must understand the important role the public has in keeping neighborhoods safe; including the need to partner with, support, & lift up community groups invested in violence prevention. We must strengthen police-community relationships & hold police accountable when they break the law. Allegheny County is unique with 132 police depts. The City of Pittsburgh represents only ? of the County's population, with the remaining ? living in suburban & rural areas. Each municipality outside the City of Pittsburgh has a unique relationship with their police force. Each dept is staffed dif-ferently & has disparate funding/training/resources so we have communities who are over/under/correctly policed. So it is imperative to have a visible & vocal leader in the DA's Office who will make clear to these depts what standards are expected and what the consequences will be when if they fall short of those.

Republican

Note: Mr. Zapalla submitted this information as part of his spring campaign in the Democratic Primary. Mr. Zapalla is running as the Republican nominee in the

November General Election and has not chosen to up-date his responses.

Steve Zappala

Party: Rep
Campaign Phone: (412) 215-1482
Campaign Email: cam-paign@stevezappala.com
Campaign Web Site: stevezappala.com
Education: B.A., Univer-sity of Pittsburgh, J.D., Duquesne University School of Law
Qualifications for office: District Attorney since 1998
Facebook: <https://www.facebook.com/DASteveZap-pala>
Twitter: @stevezappala



STEVE ZAPPALA

Questions:
Q: What are your top three priorities for this office?
A: Addressing the crises of mental health and addiction are top priorities of mine. We created courts to ensure that individuals receive treatment instead of jail. These issues intertwine with my other top priority, reducing vi-olent crime.
Q: What policies will you pursue to promote social and racial justice for all citizens?
A: We are addressing issues that disproportionately af-fect people of color and other marginalized communities. Steps we have taken are special courts that address men-tal health and addiction, and the Phoenix Court, which addresses relatively minor, non-violent offenses. The goal of these courts is to allow people to receive treatment rather than incarceration. Our office provides training to all employees to ensure they are sensitive to any biases they may have to ensure that it does not impact the cases they handle.
Q: What policy changes would you recommend to improve police accountability?
A: I was proud to secure funding for body cameras for police in Allegheny County. I am even more proud that I have convinced nearly every police agency in Allegheny County to utilize them in an effort to gather the best evi-dence possible when there is an allegation of police mis-conduct or brutality

County Controller

Description: General supervision and control of coun-ty fiscal matters. Must pass on validity of all claims against the county.
Term of office: 4 years
Salary: \$110,372

“You’ve got to vote, vote, vote, vote. That’s it; that’s the way we move forward.”

— Michelle Obama, Former First Lady

Republican

Bob Howard

Party: Rep
Campaign Phone: (412) 443-9436
Campaign Email: mahow-co1@zoominternet.net
Education: Business Ad-ministration from Penn State, graduate work at University of Missouri and University of Pittsburgh
Qualifications for office: I have actual experience in the controllership func-tion, including experience reviewing budgets and op-erational effectives and effi-ciency. I also have managerial and administrative expe-rience.



BOB HOWARD

Questions:
Q: What are your top three priorities for this of-fice?
A: Operations and management of the Allegheny Coun-ty Jail require continued scrutiny to ensure that the findings and recommendations in recent audits are ad-equately addressed. The need to address homelessness requires scrutiny of the effectiveness of the Allegheny County Husing Author-ity to manage over 3,000 dwelling units and the admin-istration of over 5,000 housing vouchers. The Pittsburgh Regional Transit Authority needs to emerge from the shadow of the COVID-19 era, with a sustainable model.
Q: Every elected office has obstacles that make it hard to accomplish its mission and responsibili-ties. What obstacle do you plan to work to remove if elected?
A: The Controller is the final independent check on the fiscal affairs of the county. Exercising independence is not conducive and is often a barrier to the future political career of the controller. I have no political ambitions to protect. I am not a member of the ruling political party. Therefore, I will be an independent watch dog, not a po-litical lapdog.
Q: What policy changes would you recommend to improve police accountability?
A: Policies are too often words on paper. Accountability is a function of experienced and competent leadership. As County Controller I will conduct real audits of police accountability, including benchmarking the Allegheny County Police with other similar operations across the nation. This is a central component in exploring innova-tive methods to improve operations including police ac-countability.

Democratic

Corey O'Connor

Party: Dem
Campaign Email: info@coreyoconnorpa.com
Campaign Web Site: coreyoconnorpa.com
Education: B.A., Duquesne University
Qualifications for office: Allegheny County Controller, 2022 - Present / Pittsburgh City Council Member, District 5, 2012-2022
Facebook: www.facebook.com/coreyoconnorpa
Twitter: www.twitter.com/CoreyOConnorPA



COREY O'CONNOR

Questions:
Q: What are your top three priorities for this office?

A: 1. Regaining public trust in County government through increased transparency and enhanced oversight of public finances 2. Bringing accountability to the Allegheny County Jail and protecting the rights of incarcerated individuals 3. Pushing the County to prioritize sustainability in budgeting and long range planning and using our powers of oversight to make sure that we're actually on track to reaching goals.

Q: Every elected office has obstacles that make it hard to accomplish its mission and responsibilities. What obstacle do you plan to work to remove if elected?

A: Two obstacles I've discovered are lack of awareness of the Controller's responsibilities and a perception that this role is used exclusively to score political points. I am working hard to make the office more visible by conducting community forums and am working to pass reforms and push for greater transparency in local government. One obstacle I'm working to remove is the difficulty accessing basic information. This is why my office has been focused on putting the information we collect online and making it as easy as possible to access. You can visit some of our new data dashboards here.

Q: What policy changes would you recommend to improve police accountability?

A: Current state law makes holding police accountable very difficult. In the absence of new legislation, one way my office can work on this issue is to solicit community feedback on issues relating to discipline and responsibility from the most over-policed communities when negotiating new police contracts. Another way my office is approaching this issue is through improved data collection. Specifically, Our office has begun the process of reaching out to local law enforcement stakeholders to investigate their policies and procedures around how bias motivated incidents, including those against Black people and LGBTQ individuals are tracked. Each jurisdiction has its own system for tracking incidents and until collection procedures are standardized it's impossible to have a complete understanding of the scale of this problem.

County Treasurer

Description: Collects taxes and other money due the county. Keeps daily accounts and must report daily to the controller all money paid out.

Term: 4 Years

Salary: \$110,372

Democratic

Erica Rocchi Brusselars

Party: Dem
Campaign Phone: (301) 204-0075
Campaign Email: acben-son@ericafortreasurer.com
Campaign Web Site: erica-fortreasurer.com
Education: B.S. in Mathematics, Carnegie Mellon University '98; M.S., University of Mississippi '00
Qualifications for office: Erica Rocchi Brusselars has extensive professional experience as a consulting pension actuary, having worked at a global firm (now Willis Towers Watson) for 14 years. Prior to that she spent two years as a middle school math teacher in an under-resourced public school. More recently she volunteered with the Abolitionist Law Center, setting up their volunteer remote courtwatch program in Pittsburgh.
Facebook: https://www.facebook.com/Erica4Treasurer
Twitter: @erica4treasurer



ERICA ROCCHI BRUSSELARS

Questions:

Q: What are your top three priorities for this office?

A: I'm uniquely qualified to bring active, independent leadership to the County Treasurer's Office. My first priority is to build confidence and capacity in the office by leading with a focus on transparency, modernization, and collaboration. Second, I'll shine a light on our County's Retirement Plan funding to ensure it is sustainably funded in the long term. With my experience as a pension actuary, I have the expertise needed to lead this conversation. Finally, I will ensure our money is invested prudently. Actuaries are trained to understand, quantify, and navigate risk to ensure we're thoughtfully investing our funds

Q: The renewable energy industry is providing a significant increase in good jobs in PA. If elected, how will you use your elected position to continue this economic growth?

A: We see the growth of renewable energy in our region in many different ways. The Treasurer's Office has assisted county departments in connecting renewable-energy grant money to residents by playing a part in the record-keeping and billing function. The Treasurer's Office can continue to be and expand its function as a conduit for such programming. Our Office's collaborative nature will foster and create discussions as to other ways the office can play a role.

Q: What policies will you pursue to promote social and racial justice for all citizens?

A: Alongside the amplification of BIPOC voices from within the Treasurer's Office, I plan to implement anti-racist training as well. I have a personal commitment to undoing racist and white-supremacist structures in our world. I believe the first step is to continuously, purposefully examine and undo those structures in one's own life.

In terms of policy, we are interested in pursuing options that move the enforcement and collection of delinquent and defaulted accounts in a way that serves those individuals struggling financially to pay their taxes. We'll be working to develop a portfolio of policies that'll work toward equity and compassion while upholding the financial duties of the Office.

Outside of its direct responsibilities, I see this position as one of a countywide leader. I'll use the platform to highlight critical issues I'm passionate about: needed improvements of Allegheny County Jail and a need to provide more robust critical services to our most vulnerable communities.

Republican

Herb Ohliger

Party: Rep
Biological info:

Questions:

Q: What are your top three priorities for this office?

A: -no response-

Q: The renewable energy industry is providing a significant increase in good jobs in PA. If elected, how will you use your elected position to continue this economic growth?

A: -no response-

Q: What policies will you pursue to promote social and racial justice for all citizens?

Member of County Council At-Large

Description: Initiates and adopts ordinances, makes appropriations, adopts annual balanced budget, adopts an administrative code, approves Executive appointments, conducts investigations of County Departments, accepts grants, gifts or donations on behalf of County, may modify or eliminate departments, agencies or functions that no longer serve citizens.

Term: 4 years

Salary: \$10,939

Republican

Sam DeMarco

Party: Rep
Biological info:

Questions:

Q: What are your top three priorities for this office?

A: -no response-

Q: What policies will you pursue to promote social and racial justice for all citizens?

A: -no response-

Q: What policy changes would you recommend to improve police accountability?

A: -no response-



"A man without a vote is a man without protection."

-Lyndon B. Johnson, Former U.S. President

Democratic

Bethany Hallam

Party: Dem
Campaign Email: bethanyhallampgh@gmail.com
Campaign Web Site: bethanyhallam.com
Education: Duquesne University, bachelor's degree in Public Relations. Currently attending Duquesne Law School.
District: At-Large
Term: 4 Year
Facebook: BethanyPGH
Twitter: BethanyHallam



BETHANY HALLAM

Questions:

Q: What are your top three priorities for this office?

A: What are your top three priorities for this office?
-Funding services that help us: we should expect more from our government and I will continue to push our County budget to fund services that will help our residents
-Housing + Transportation: We need to support more housing to make our region as affordable as possible for everyone, and make PRT more accessible and reliable.
-Environment: We banned fracking in county parks, but can expand that ban to include the rest of the county.

Q: What policies will you pursue to promote social and racial justice for all citizens?

A: Intersectionality is at the core of my work on council. Whether I'm looking at environmental issues, negotiating a budget, sitting on the Jail Oversight Board, or on the Board of Elections, I consider how policy will impact different groups of people & who may need extra support to mitigate prior harm or disadvantages. The residents of Allegheny County have a diverse range of needs, so I work hard to make sure everyone has a seat at the table. Beyond that, I work to make sure I am proactively reaching out to communities and areas that may not be as likely to engage with their elected leaders.

Q: What policy changes would you recommend to improve police accountability?

A: Nearly every social issue has fallen to the criminal punishment system—and as a result, to police to address. However, they neither have the tools nor the resources to actually tackle those issues. Mental health & substance use disorders, housing instability, community & familial violence are all matters that are primarily dealt with through policing, often leading to counterproductive and destructive results. We need to shift that undertaking to experts who know how to handle folks in these most vulnerable situations, not escalate the situations by involving armed law enforcement officers. policing, often leading to counterproductive and destructive results. We need to shift that undertaking to experts who know how to handle folks in these most vulnerable situations, not escalate the situations by involving armed law enforcement officers.

Member of County Council District 2

Description: Initiates and adopts ordinances, makes appropriations, adopts annual balanced budget, adopts an administrative code, approves Executive appointments, conducts investigations of County Departments, accepts grants, gifts or donations on behalf of County, may modify or eliminate departments, agencies or functions that no longer serve citizens.

Term: 4 years

Salary: \$10,939

Republican

Suzanne Filiaggi

Party: Rep
Campaign Email: suzanne4cc@gmail.com
Campaign website: TBA
Education: Washington & Jefferson College, Duquesne University, Thomas R. Kline School of Law
Qualifications for office: Small Business Owner/ Attorney/Board and Legislative Experience
Facebook: TBA
Twitter: FriendsOfSuzanne @SuzanneFiliaggi



SUZANNE FILIAGGI

Questions:

Q: What are your top three priorities for the office?

A: I sit on the Special Committee on Assessment Practices. I commit to a thorough examination of the standards and practices of property taxation and will advocate for reassessments every 3 years creating a more fair housing environment within the County to attract both residents and businesses. North Park is the largest in our park system. It is the crown jewel of Dist 2. I pledge to preserve its Beauty and encourage public-private partnerships to increase accessibility and experiential value. I will employ a Bi-Partisan approach to create ethical and professional standards within Council.

Q: What policies will you pursue to promote social and racial justice for all citizens?

A: Our county has numerous policies already in place to promote social and racial justice. I pledge to ensure that county hiring practices and contract awards are adhering to the mandates set forth in the MWDBE program. These guidelines exist to create effective methods that strengthen economic opportunities for Minority, Women, and Disadvantaged business enterprises. Regular audits of our various County agencies and Departments will expose potential violations and allow for greater transparency thus establishing more equal access to economic justice and prosperity for all residents.

Q: The renewable energy industry is providing a significant increase in good jobs in PA. If elected, how will you use your elected position to continue this economic growth?

A: Sustainability initiatives are at the forefront of most government bodies. Allegheny County is no different and it sits uniquely at the epicenter of an energy economy that has created thousands of jobs and generated billions of dollars in commerce. Renewable energy is an increasing piece of that energy output. The County's implementation of the C-PACE Program is a significant commitment to that end. Projects like Mill 19 and the Gaucho Solar wind farm near the Airport are great examples of the potential that solar electric generation has in our region. Hydroelectric power is also a viable path for clean energy as Allegheny County is surrounded by 3 rivers. Harnessing hydroelectric power is a natural fit for this area. The County supports the effort by entering into a Power Purchasing Agreement to buy renewable electricity from a hydroelectricity plant located on the Ohio River. I will work with my colleagues to continue supporting our local economy and growing clean energy jobs.

Q: What action, if any, would you support to improve air quality in Western Pennsylvania?

A: As the seated Member of Council in Dist. 2, I have already supported several Air Quality initiatives on behalf of residents of Allegheny County and Western Pennsyl-

vania. I am a member of the Committee of Health & Human Services and have participated in all of the regular and informational meetings designed to educate Council and the Community on the state of the County's Environmental and Air Quality. I am familiar with the serious issues surrounding the Episodic rule and the impact of air inversions on pollution output. I have voted affirmatively, along with my Democratic colleagues on Council, to support 12633-23, a Motion urging the USEPA to revise its standard for fine particulate matter from 12 micrograms per cubic meter to 9-10. I have also approved 12553-23, an Ordinance ratifying an amendment addressing "Control of VOC Emissions" to the ACHD Rules and Regulations. If elected, I will continue to take a fiscally responsible and balanced approach to air quality legislation.

Democratic

Todd Hamer

Party: Dem
Campaign Phone: (571) 438-2976
Education: BS Penn St/ MEd. Virginia Commonwealth Univ.
Qualifications for office: Current member of Sewickley Council
Campaign Email: ?tod-d4alleghenycounty@?yahoo.com

Questions:

Q: What are your top three priorities for the office?

A: Every decision I make with keep our future generations in mind. I believe all children deserve these three things.

1. A clean safe school.
2. A clean safe community center.
3. A clean safe park.

Clearly, this shows my top priorities are not us, but our future generation. I cannot stress enough how environmental issues, education, and safety are the most important issues we face.

As the richest country in the history of the world there is no reason we cannot make our world better for the future generations.

Q: What policies will you pursue to promote social and racial justice for all citizens?

A: Social and racial justice are two issues I care deeply about. We must change how we deal with low level crimes. This includes, yet is not limited to increased spending on mental health, education, and the environment.

In addition to this we must make all decisions knowing that representation matters.

Q: The renewable energy industry is providing a significant increase in good jobs in PA. If elected, how will you use your elected position to continue this economic growth?

A: The beauty with this industry is that it is moving forward with or without us. The market is there to help renewables grow. My job is to listen to the industry and see where we as a county can empower renewables to grow as an industry.

I am far from an expert on this industry, yet owning my own ignorance on this industry gives me the opportunity to listen and grow with this industry.

Q: What action, if any, would you support to improve air quality in Western Pennsylvania?

A: Each morning I listen to NPR and hear the air quality data. It disturbs me that we still deal with this issue. We cannot continue to pollute our air and allow industry



TODD HAMER

try a free pass. We must hold companies that pollute our region accountable. We must learn from the past and see how many boom and bust industries have polluted our region and left us with their remains. Take a walk through the Mon Valley and the amount of waste from energy companies of the past is disturbing. We must not allow this to occur again. I will have no problem holding those who ruin our environment accountable for their actions.

Member of County Council District 05

Description: Initiates and adopts ordinances, makes appropriations, adopts annual balanced budget, adopts an administrative code, approves Executive appointments, conducts investigations of County Departments, accepts grants, gifts or donations on behalf of County, may modify or eliminate departments, agencies or functions that no longer serve citizens.
Term: 4 years **Salary:** \$10,939

Republican

Mike Embrescia

Biological info:
Questions:
Q: What are your top three priorities for the office?
A: - no response -
Q: What policies will you pursue to promote social and racial justice for all citizens?
A: - no response -
Q: The renewable energy industry is providing a significant increase in good jobs in PA. If elected, how will you use your elected position to continue this economic growth?
A: - no response -
Q: What action, if any, would you support to improve air quality in Western Pennsylvania?
A: - no response -

Democratic

Dan Grzybek

Party: Dem
Campaign Email: info@dan4district5.com
Campaign Web Site: dan4district5.com/
Education: Bachelor's degree in Chemical Engineering from the University of Pittsburgh; Master's degree in Interdisciplinary Engineering from Purdue University; Graduate Certificate in Business Management from Indiana University
Qualifications for office: Engineer on Nuclear Reactor Safety Systems for US Naval Aircraft Carriers; Bethel Park School Director; Vice Chair of Bethel Park Democratic Committee; Volunteer Fire Fighter; Emergency Substitute Teacher in Bethel Park; Youth Mentor at South Hills Interfaith Movement and Navy Seaperch program
Facebook: https://www.facebook.com/DanGrzybekDis-



DAN GRZYBEK

trict5
Twitter: https://twitter.com/Dan_Grzybek

Questions:
Q: What are your top three priorities for the office?
A: 1. Improve our local air quality - Allegheny County has the 14th worst air quality in the country as it pertains to particulate matter and is in the top 1% for cancer risk from large industrial sources.
2. Reform the Allegheny County Jail (ACJ) - There are unacceptable human rights abuses occurring within the ACJ. We need new leadership so that people (most who have not been convicted of a crime) are treated humanely and so that tax dollars are not being wasted.
3. Take advantage of federal funding (CHIPS Act, IRA, etc.) to bring good jobs to Allegheny County in areas like renewable energy.
Q: What policies will you pursue to promote social and racial justice for all citizens?
A: Despite making up only 13% of the local population, roughly 67% of the population at the ACJ is Black. Similarly, over 40% of Clairton is Black, and the median income is only \$37,000. Issues like air quality and inhumane carceral treatment disproportionately impact people of color and the economically disadvantaged. If elected, I will fight to end our practice of forced, unpaid labor (slavery) within the ACJ, and will work to ensure that our worst polluters are adhering to their Article XXI and Title V air pollution limits and are being held accountable when they are not.
Q: The renewable energy industry is providing a significant increase in good jobs in PA. If elected, how will you use your elected position to continue this economic growth?
A: As I previously mentioned, bringing jobs to Allegheny County in areas like renewable energy and clean technology is one of my top priorities. I believe that the best way for County Council to facilitate this is by ensuring the county has the skilled workforce necessary to fill these jobs. There is a national shortage in skilled trades positions like electricians and welders. If elected, I will advocate for increased funding for jobs programs in these areas, especially in our traditionally underserved communities who are often left out of the conversation. One fantastic resource we already have which deserves more funding is CCAC, who offers some extremely valuable apprentice programs and whose West Hills Center is a premier training facility for skilled and technical trades careers.
Q: What action, if any, would you support to improve air quality in Western Pennsylvania?
A: Improving the air quality in Western Pennsylvania is my #1 priority. I believe that every resident in Allegheny County deserves clean air. We shouldn't have to worry about our children going outside at recess because it's difficult for them to breathe. As a former Operations Manager at US Steel Clairton, I understand that for many large corporations, the pollution they produce is simply viewed as the cost of doing business. I support increasing the penalties on the county's worst polluters for sacrificing our health, and I believe that we must ensure that the Allegheny County Clean Air funds obtained from these fines are utilized in a manner which maximizes our local air quality. In order to do so, County Council must push to adequately fund the county's air quality program. Additionally, I believe the Mon Valley Episode Rule must be analyzed to guarantee that those facilities included are taking the steps necessary to mitigate pollution on air quality warning days.

Member of County District 06

Description: Initiates and adopts ordinances, makes appropriations, adopts annual balanced budget, adopts an administrative code, approves Executive appoint-


ments, conducts investigations of County Departments, accepts grants, gifts or donations on behalf of County, may modify or eliminate departments, agencies or functions that no longer serve citizens.
Term: 4 years **Salary:** \$10,939

Republican

Sean C. McGrath

Party: Rep
Biological info:

Questions:
Q: What are your top three priorities for the office?
A: -no response-
Q: What policies will you pursue to promote social and racial justice for all citizens?
A: -no response-
Q: The renewable energy industry is providing a significant increase in good jobs in PA. If elected, how will you use your elected position to continue this economic growth?
A: -no response-
Q: What action, if any, would you support to improve air quality in Western Pennsylvania?
A: -no response-



“I don’t care what responsibilities you have today, there’s no greater responsibility than being in control of your future and your future starts now! We don’t have time, no procrastinating, don’t let the discouragement take you off course, that’s not how my people or my generation will go down...this is the loudest way to make your voice heard!”

- Rihanna, Singer

Democratic

John F. Palmiere

Party: Dem
Campaign Email: peopleforpalmiere@gmail.com
Qualifications for office: Incumbent Member of Council, Small Business Owner for over 40 years

Questions:
Q: What are your top three priorities for the office?
A: My first priority is to continue to make County Council relevant and an equal partner with the County Executive to govern Allegheny County. My second priority is to keep a balanced budget that is responsible to the taxpayers of Allegheny County which provides the services that all the residents need. My third priority is maintaining and growing a County parks system that is vibrant and accessible for all of our citizens.
Q: What policies will you pursue to promote social and racial justice for all citizens?
A: Allegheny County Council passes an annual budget of over \$3 Billion dollars that allocates many resources to promote social and racial justice, which ensure that all citizens are afforded an equal shot. The 2023 Budget allocates more resources for our Public Defender's Office so that citizens of lesser means can receive the best representation. Also, The Department of Human Services leverages a small amount of County tax dollars in order to tap into a large sum of Federal and State dollars which promote social and racial justice through programs aimed at those who have been marginalized.
Q: The renewable energy industry is providing a significant increase in good jobs in PA. If elected, how will you use your elected position to continue this economic growth?
A: When Allegheny County bids a contract, we ensure that green initiative standards are included in that bid in order to emphasize and commit to the importance of renewable energy. As a member of the Public Works Committee, I will continue to push for projects that support good jobs and further our priorities in this space.
Q: What action, if any, would you support to improve air quality in Western Pennsylvania?
A: Allegheny County Council has a powerful say in improving the air quality in Western Pennsylvania through the funding of the County Health Department. The Health Department has taken many strides to improve air quality in my time on Council. While the improvements are ever changing, I will continue to give the resources necessary to the Health Department in order to accomplish the best air quality for the citizens of Allegheny County.

Member of County Council District 07

Description: Initiates and adopts ordinances, makes appropriations, adopts annual balanced budget, adopts an administrative code, approves Executive appointments, conducts investigations of County Departments, accepts grants, gifts or donations on behalf of County, may modify or eliminate departments, agencies or functions that no longer serve citizens.



JOHN F. PALMIERE

Democratic

Nick Futules

Term: 4 years
Salary: \$10,939

Party: Dem
Biological info:

Questions:
Q: What are your top three priorities for the office?
A: -no response-
Q: What policies will you pursue to promote social and racial justice for all citizens?
A: -no response-
Q: The renewable energy industry is providing a significant increase in good jobs in PA. If elected, how will you use your elected position to continue this economic growth?
A: -no response-
Q: What action, if any, would you support to improve air quality in Western Pennsylvania?
A: -no response-

Member of County Council District 10

Description: Initiates and adopts ordinances, makes appropriations, adopts annual balanced budget, adopts an administrative code, approves Executive appointments, conducts investigations of County Departments, accepts grants, gifts or donations on behalf of County, may modify or eliminate departments, agencies or functions that no longer serve citizens.

Independant

Carl Redwood

Biological info:
Questions:
Q: What are your top three priorities for the office?
A: -no response-
Q: What policies will you pursue to promote social and racial justice for all citizens?
A: -no response-
Q: The renewable energy industry is providing a significant increase in good jobs in PA. If elected, how will you use your elected position to continue this economic growth?
A: -no response-
Q: What action, if any, would you support to improve air quality in Western Pennsylvania?
A: -no response-

Democratic

DeWitt Walton

Party: Dem
Campaign Email: ebonyguy@verizon.net
Campaign Phone: (412) 418-5244

Q: What are your top three priorities for the office?
A: To have a county that has a more robust economy, one that has diverse, equitable and inclusive employment and leadership opportunities. I also want to improve educational outcomes because that will result in improvements in the quality of life.

Q: What policies will you pursue to promote social and racial justice for all citizens?

A: I will continue to invest in practices that will result in a cleaner environment, expand educational support for early childhood education, Pre K and afterschool programs that will result in improved life outcomes. I will also continue to support workforce development programs that demonstrate success in raising per-capita incomes in disadvantaged populations. I will support projects that reduce pollution and increase utilization of renewable sources of energy.
Q: The renewable energy industry is providing a significant increase in good jobs in PA. If elected, how will you use your elected position to continue this economic growth?
A: As I indicated earlier I am a supporter of the renewable energy sector because it promotes a cleaner environment, while creating new family sustaining employment opportunities. These jobs will provides certifications for workers that are permanent, portable and transferable which will result in increasing per-capita earnings opportunities.
Q: What action, if any, would you support to improve air quality in Western Pennsylvania?
A: I intend to become more familiar with current regulations and determine how regulations are developed, implemented and improved upon.

Member of County Council District 11

Initiates and adopts ordinances, makes appropriations, adopts annual balanced budget, adopts an administrative code, approves Executive appointments, conducts investigations of County Departments, accepts grants, gifts or donations on behalf of County, may modify or eliminate departments, agencies or functions that no longer serve citizens.

DEWITT WALTON

“The most important office, and the one which all of us can and should fill, is that of private citizen.”
— Louis Brandeis

Republican

Eileen Lo Cunningham

Party: Rep
Biological info:

Questions:
Q: What are your top three priorities for the office?
A: -no response-
Q: What policies will you pursue to promote social and racial justice for all citizens?
A: -no response-
Q: The renewable energy industry is providing a significant increase in good jobs in PA. If elected, how will you use your elected position to continue this economic growth?
A: -no response-
Q: What action, if any, would you support to improve air quality in Western Pennsylvania?
A: -no response-

Democratic

Paul Klein

Party: Dem
Campaign Phone: (412) 260-7057
Campaign Email: pmklein612@gmail.com
Campaign Web Site: pmklein.com



PAUL KLIEN

Questions:
Q: What are your top three priorities for the office?
A: As a member of council, I have a long list of priorities. I would begin with my commitment to ensure that that we advance initiatives that prioritize the environmental and public health implications of all of our decisions. That would mean enforcing existing regulations and conducting an ongoing audit of what is and is not being enforced and developing protocols with more stringent requirements. Second, ensuring that our commitment to social justice is real and measurable and is reflected in the services that the county provides. Our decisions as a council, including the legislation we advance
Q: What policies will you pursue to promote social and racial justice for all citizens?
A: If our commitment to social justice is real, it must embody our commitment to racial justice. As a member of the Equity, Diversity and Inclusion Committee at the University of Pittsburgh, I have expanded my consciousness of the damaging implications of not being attentive to the social and racial equity implications of the choices that we make. There are well founded equity assessment tools that can credibly support our efforts. I would advance an education initiative to ensure that all county personnel (including members of council), participate in an EDI education program.
Q: The renewable energy industry is providing a significant increase in good jobs in PA. If elected, how will you use your elected position to continue this economic growth?
A: The economic opportunities of the future have to reflect a meaningful and measurable commitment to consequentially reducing our carbon footprint. The environmental crisis that we have witnessed unfolding

in real time is really here. We have to invest in renewable energy technologies, i.e. solar, wind, geothermal, biomass, etc. We have to embrace the idea of a circular economy based on reuse and regeneration. The green job market is growing and workers with the knowledge or skills needed to support environmental sustainability, will increasingly be in demand and those are the enterprises that as a region we ought to be courting and incentivizing.
Q: What action, if any, would you support to improve air quality in Western Pennsylvania?
A: I recently convened a public hearing as the chair of the Committee on Health and human services to consider just this question and more specifically, the Episodic Rule which is intended to address weather inversion episodes where particulate matter exceeds acceptable standards. At this meeting I recommended that the EPA adopt an even more stringent national ambient air standard than was contemplated their proposed new rule on fine particle pollution. I introduced a sense of council motion to this effect and it was passed by county council. I will continue to press for action on air quality as we just received a failing score from the National lung Association and the air quality in our county is the worst in the state.

United We Stand

Robert McCune

Party: United We Stand
Biological info:

Q: What are your top three priorities for the office?
A: -no response-
Q: What policies will you pursue to promote social and racial justice for all citizens?
A: -no response-
Q: The renewable energy industry is providing a significant increase in good jobs in PA. If elected, how will you use your elected position to continue this economic growth?
A: -no response-
Q: What action, if any, would you support to improve air quality in Western Pennsylvania?
A: -no response-

Member of County Council District 13

Description: Initiates and adopts ordinances, makes appropriations, adopts annual balanced budget, adopts an administrative code, approves Executive appointments, conducts investigations of County Departments, accepts grants, gifts or donations on behalf of County, may modify or eliminate departments, agencies or functions that no longer serve citizens.
Term: 4 years Salary: \$10,939

Democratic

David Bonaroti

Party: Dem
Campaign Email: vote@bonarotiforacc.com
Campaign Web Site: bonarotiforacc.com
Education: Penn State University (B.S.) New York University (MA) University of Pittsburgh (MBA) NY Code + Design Academy (Continuing Education)
Qualifications for office: 8+ years working in the private

sector where I was responsible for building technical solutions/applications, business development, as well as product and operations management. Intern to former State Rep. Frank Dermody. Volunteer for organizations such as Literacy Pittsburgh, America Reads+Counts, Computer Science Summer Institute (Hour of Code initiative), and New York Cares (GED Math Instructor).



DAVID BONAROTI

Questions:
Q: What are your top three priorities for the office?
A: Affordable housing is a critical issue in our community. Too many people are struggling to pay their rent or mortgage, and many are being forced to choose between housing and other basic necessities like food and healthcare.
We must end the stigmatization around mental health and expand services to provide immediate support to vulnerable residents of Allegheny County. This includes making sure that people have access to affordable mental health care, regardless of their insurance status.
We must support small businesses as they are the bedrock to our local economy.
Q: What policies will you pursue to promote social and racial justice for all citizens?
A: Reforming the criminal justice system: This means reducing mass incarceration by decriminalizing minor offenses and addressing the mental health crisis affecting our communities. One of the most alarming statistics from a recent ACJ audit was that 75% of the jail's population is prescribed at least one psychotropic medication. How can we expect to rehabilitate individuals when we are criminalizing mental illness? Mental health services available to our community are woefully underfunded and inadequate and placing those individuals in jail is not a solution.
Q: The renewable energy industry is providing a significant increase in good jobs in PA. If elected, how will you use your elected position to continue this economic growth?
A: Making renewable energy more affordable: The cost of renewable energy is increasingly competitive, but it is still not as affordable as traditional fossil fuels. We must continue development of production, capacity, and distribution infrastructure. Another major hurdle inhibiting this economic growth is navigating the complex regulatory environment which needs to be redefined.
Investing in research and development: Renewable energy technologies are constantly improving, and we need to continue to invest in research and development to bring new, more efficient technologies to market. To do so, we must provide tax incentives that allow these companies to remain solvent as they invest in product development which require significant capital expenditures. Lowering unit manufacturing costs and boosting product efficiency will allow for increased financial accessibility and consumer adoption.
Q: What action, if any, would you support to improve air quality in Western Pennsylvania?
A: As a member of County Council, we must continue the efforts to petition the EPA to enact more stringent particulate emission limits within our region. Additionally, we must significantly raise the fines imposed upon organizations that violate existing emission standards. Today, businesses simply view those fines as standard operating costs. If we raise the fines to levels that jeopardize their ability to conduct day-to-day operations (especially for repeat offenders) we can curtail this behavior and signal to adjacent industries that they will be held accountable for any (and all) violations.

Independant

Sam Schmidt

Biological info:
Questions:
Q: What are your top three priorities for the office?
A: -no response-
Q: What policies will you pursue to promote social and racial justice for all citizens?
A: -no response-
Q: The renewable energy industry is providing a significant increase in good jobs in PA. If elected, how will you use your elected position to continue this economic growth?
A: -no response-
Q: What action, if any, would you support to improve air quality in Western Pennsylvania?
A: -no response-

Pittsburgh Controller

Description: The City Controller is the fiscal watchdog for the citizens of the City of Pittsburgh. It is the job of the Controller to protect City tax dollars from waste, fraud and abuse. The Controller does this by auditing all city government related expenditures.
Term: 4 years **Salary:** \$82,386

Democratic

Rachael Heisler

Party: Dem
Campaign Phone: (412) 715-5385
Campaign Email: rachael@rachaelforcontroller.com
Campaign website: www.rachaelforcontroller.com
Education: BA, University of Pittsburgh; MPA, Penn State University
Qualifications for office: Current Deputy City Controller, Background in sustainable public finance
Facebook: <https://www.facebook.com/rachaelforcontroller>
Twitter: twitter.com/rachaelheisler



RACHAEL HEISLER

Q: What are your top three priorities for this office?
A: Making sure the city remains fiscally healthy, we can continue to pay our bills, honor our commitment to workers and retirees
Making sure city funds are spent fairly, equitably, and as intended
Making sure everyone pays their fair share, including our largest employers
Q: Every elected office has obstacles that make it hard to accomplish its mission and responsibilities. What obstacle do you plan to work to remove if elected?
A: We need to make it easier for everyone to access their government.
Q: What policy changes would you recommend to improve police accountability?
A: Making a frequency distribution of offending officers available in the PBP's annual report so the pub-

lic is aware of officers prone to excessive force
Study the manpower necessary for each police zone and hire accordingly to avoid police officers working excessive overtime, which is when conduct issues are most likely to occur

Issue a formal policy on marijuana decriminalization

Pittsburgh Member Of Council

Description: Council consists of nine members elected by district by the city of Pittsburgh voters. The legislative power is vested in the council. Council members in odd-numbered districts are elected 2 years after the even-numbered district members are elected.
Term: 4 years **Salary:** \$76,544

Pittsburgh Member Of Council District 1

Democratic
Bobby Wilson

Party: Dem
Twitter:
Biological info:

Questions:
Q: What are your top three priorities for this office?
A: -no response-
Q: What policies will you pursue to promote social and racial justice for all citizens?
A: -no response-
Q: What policy changes would you recommend to improve police accountability?
A: -no response-

Pittsburgh Member Of Council District 3

Democratic
Bob Charland

Party: Dem
Campaign Phone: (267) 670-1768
Campaign Email: info@charlandforpgh.com
Campaign Web Site: charlandforpgh.com
Education: Bachelor of Science in Biology from the University of Pittsburgh
Qualifications for office: Since 2018, I have worked in

Councilman Bruce Kraus's office, where I have managed constituent services, helped develop policy, and have attended a wide variety of community meetings, building relationships across the district
Facebook: facebook.com/charlandforpgh
Twitter: twitter.com/charlandbob



BOB CHARLAND

Questions:
Q: What are your top three priorities for this office?
A: If elected, I will work to make sure that East Carson Street has a dedicated business district manager who is tasked with creating a safe, vibrant and diverse business district, like most of other business districts in the city already have. I will make sure that Oakland residents have a voice in the redevelopment of our second downtown, against powerful stakeholders like UPMC and the University of Pittsburgh, while prioritizing housing affordability and homeownership in the neighborhood. In the Hilltop, I will continue to work on empowering neighborhood groups to fight slumlords.
Q: What policies will you pursue to promote social and racial justice for all citizens?
A: BIPOC voices do not need a translator, they need a microphone and it will be my job to make sure that voices from these communities are heard in Council. Property maintenance issues and vacant properties disproportionately affect our neighborhoods of color and are well within the council's responsibility to address. Blight does not plague all neighborhoods in the City equally. These issues deter investment, are attractive nuisances for crime, and ultimately lead to families being forced to leave our neighborhoods. I will work on speeding up processes that get vacant property into reuse.
Q: What policy changes would you recommend to improve police accountability?
A: First and foremost, I never want it to be my voice alone on this issue; I will always prioritize conversations with those most impacted as we navigate a needed reimagining of public safety and increased police accountability. I believe as council, we need to question if the police are always the right tool for the job and acknowledge that we are asking too much of them. We cannot have police responding to situations, such as mental health crises, where they are not trained and create dangerous situations for everyone involved. We need to ensure that police have all of the information they need to respond to calls, that they are the right response to those calls, and that if something goes wrong, we deserve to know every detail of what happened.

“Our political leaders will know our priorities only if we tell them, again and again, and if those priorities begin to show up in the polls.”
— Peggy Noonan, writer



Pittsburgh Member
Of Council District 5

Democratic

Barb Warwick

Party: Dem
Campaign Email: barb-forpgh@gmail.com
Campaign Web Site: barb-forpgh.com
Education: BA from Barnard College, MA from the University of Heidelberg (Germany)
Qualifications for office: I'm a working mom living in Four Mile Run since 2014. I got my start in Pittsburgh politics as a volunteer for Bernie Sanders, Hillary Clinton, Ed Gainey, Summer Lee, and the APA. As a community organizer in Greenfield and Hazelwood, I worked to stop the Mon Oakland Connector shuttle road through Schenley Park and advocated for new playgrounds, better bus service, more after-school opportunities, and greater food access. I'm also the Vice Chair of Pittsburghers for Public Transit.
Facebook: Barb4PGH
Twitter: Barb4PGH



BARB WARWICK

Questions:
Q: What are your top three priorities for this office?
A: There are so many issues that need to be addressed, from managing our unhoused population, to keeping our kids safe when they aren't in school, to creating affordable housing, to expanding food access. We need to be addressing them all, both at the Council table & on the ground with our constituents. My team & I are focused on taking a holistic approach to the level of multitasking that is required to do this job. That means working closely with city departments, the mayor's office, the county, & other authorities to help them understand what needs to be prioritized in each neighborhood.
Q: What policies will you pursue to promote social and racial justice for all citizens?
A: As a member of city council, promoting social and racial justice means making sure parts of my district that have historically been left behind have a seat at the table. I have worked closely with my neighbors in Greater Hazelwood to improve transit and food access, & to increase funding for rec programs. Going forward, I am committed to growing city leaders from Greater Hazelwood by connecting with young people and helping them engage with city government. It's high time that Hazelwood had an elected representative in city government, and I am committed to helping make that happen
Q: What policy changes would you recommend to improve police accountability?
A: We need to take a holistic approach to public safety – one that focuses the work of the police on dealing with the types of violent crime they are trained to handle. Having social workers respond to nonviolent mental health calls is a step in the right direction. Something else we could do is enact mandatory self-service telephone reporting for non-urgent issues so that officers can focus on the critical calls. This would result in fewer overtime hours for officers and fewer contacts between officers and the public, helping to minimize violent interactions between police and citizens.

Pittsburgh Member
Of Council District 7

Democratic

Deb Gross

Party: Dem
Biological info:

Questions:
Q: What are your top three priorities for this office?
A: -no response-
Q: What policies will you pursue to promote social and racial justice for all citizens?
A: -no response-
Q: What policy changes would you recommend to improve police accountability?
A: -no response-

Independant

James C. Miller

Party: I
Biological info:

Questions:
Q: What are your top three priorities for this office?
A: -no response-
Q: What policies will you pursue to promote social and racial justice for all citizens?
A: -no response-
Q: What policy changes would you recommend to improve police accountability?
A: -no response-



“Bad officials are elected by good citizens who don’t vote.”
—George Jean Nathan, American Critic and Magazine Editor

Pittsburgh Member of Council District 9

Democratic

Khari Mosley

Party: Dem
Campaign Phone: (412) 946-8651
Campaign Email: info@mosleyforpgh.com
Campaign Web Site: www.mosleyforpgh.com
Education: Indiana University of PA, Political Science Major
Qualifications for office: 2004-2009: Democratic Committee Chairman 22nd Ward; 2005-2007: Pennsylvania State Director League of Young Voters/League of Young Voters Education Fund; Campaigns Director 2007-2008 Pittsburgh United; 2008-2009: National Political & Policy Director League of Young Voters/League of Young Voters Education Fund; 2009-2012: Director of Green Economy Initiatives GTECH Strategies; 2012-2019: Pennsylvania State Director BlueGreen Alliance; 2019-Present: Director 1Hood Power & Political Director of 1Hood Media
Twitter: www.twitter.com/mosleyforpgh
Facebook: www.facebook.com/mosleyforpgh



KHARI MOSLEY

Questions:

Q: What are your top three priorities for this office?

A: My top three priorities as a council member are: (1) Making our streets safer through a multilayered and comprehensive approach that addresses the root causes of crime, such as poverty, mental illness, food insecurity, housing instability, and other traumatic experiences. (2) Addressing our affordable housing challenges by empowering neighborhoods in the planning process and approaching community building comprehensively with a lens toward equity. (3) Prioritizing the modernization of our roads, bridges, and other critical elements of our city's infrastructure.

Q: What policies will you pursue to promote social and racial justice for all citizens?

A: To promote social and racial justice for all, I will focus on comprehensive community health, people-centered public safety, resilient infrastructure, equitable neighborhood development, affordable housing, fair wages, climate protection, food security, equity, inclusion, and other critical public policy goals.

Q: What policy changes would you recommend to improve police accountability?

A: We must hold officers who commit misconduct accountable. These specific actions I would take as a councilman to achieve this goal are: Require transparency and publicly available information concerning use-of-force policies. Require accurate records of police misconduct through internal affairs case management. Require body camera footage and other evidence of officer behavior to be shared promptly. Call for special investigators to investigate instances where police have seriously injured or killed civilians. Regularly survey the community to gauge their experiences and perceptions of the police. Implement outreach and recruitment strategies to increase the proportion of police officers who are women and people of color. Strengthening the civilian police review board to have more oversight powers on police misconduct.

School Director Pittsburgh

Description: School Directors are elected on behalf of the community to oversee the education of students in their jurisdiction. They serve as agents of the state legislature. They are responsible for curriculum and instruction management, all finances including development of annual budgets and levying of taxes and issuance of debt obligations when necessary; personnel; legal matters; management of facilities; and transportation of students as appropriate. Schools may include pre-K and career and technical schools. The school board consists of nine members who serve four-year terms of office without pay. The school district of the city of Pittsburgh includes Mount Oliver. In 2019, directors for even numbered districts will be elected.

Term: 4 years

School Director Pittsburgh

Republican

Ron Sofo

Party: Rep
Campaign Phone: (412) 260-7559
Campaign Email: sofoforppsdistrict2@gmail.com
Campaign Web Site: www.RonSofo.com
Education: Ph.D in Counselor Education/Supervision of Curriculum & Instruction, University of Pittsburgh 1981; MS ED College Student Development (Career & Social/Emotional Counseling), Alfred University 1978; BA University of Rochester, 1976, Psychology minor in history and instrumental music.
Qualifications for office: Retired educators with 32 years of experience that include: 19 years as a public school superintendent/assistant superintendent with the Freedom Area SD in Beaver County PA, 1993-2012; 6 years as CEO/Principal of City Charter High School in Pittsburgh PA, 2012-2018; 4 years as Special Assistant to PPS Superintendent, Dr. Richard Wallace, 1988-92; Greeway Middle School Assistant Principal, 1992-93; Prevention Counselor with the McKeesport Area SD, 1986-1988. I have a positive record of results for youth within every organization I have served.
Facebook: Ron Sofo, Democrat for PPS School Board District #2



RON SOFO

Questions:

Q: What policies or programs do you advocate that would foster a school atmosphere where everyone feels physically, emotionally, and intellectually safe?

A: Safety begins and ends with developing & sustaining caring relationships between & among students, their families, teachers, school administrators & support staff. Keeping the same teachers with students for 2-4 years (looping) is a necessary pillar to create safe, caring learning and work environments. Reliable & results-proven community partners that assist students, family & school staff with physical & mental health, along with basic support services for families (affordable housing, living wage work) integrate into

a seamless community school environment during & after the school day are essential for safety for all.

Q: In what order would you, as a potential school board member, place the following priorities for your district: athletics, core academic programming, extracurricular opportunities (music, art, clubs, etc.), facilities maintenance/expansion, and technology development? Please explain.

A: Priorities in descending order: Core academics including the Arts/Music, technology development, facilities M&E, extracurriculars, athletics. Over 60% of Black third graders are not reading at grade level. A "D" grade does nothing to prepare students for success. Academic success must be supported by appropriate use of educational technology as a learning tool & to acquire industry standard skills for the global workplace. PPS schools are, on average, 84 years old and must be assessed for their ability to support core academic priorities. All students need equitable access to extracurriculars & athletics to prepare them for healthy living.

Q: How would you address anticipated shortfalls in school funding over the next few years? Please be specific.

A: Lead for growth & expand quality learning opportunities for all students, especially students who have been historically marginalized by the traditional public education model. Transparently modernize & appropriately size the number of buildings to educate ~19,000 students instead of paying to maintain 38,000 seats. Consistently competitively bid for services contracts like student transportation & employee healthcare. Demand more state sharing of rising retirement costs. Improve PPS' ability to hold current families & students in the district as well as attract new families.



"Voting is not only our right—it is our power."

"When we vote, we take back our power to choose, to speak up, and to stand with those who support us and each other."

— Loung Ung, activist

Democratic

Devon Taliaferro

Party: Dem
Campaign Phone: (412) 427-2211

Campaign Email: taliaferrodevon@gmail.com

Campaign Web Site: www.devontaliaferro.com

Education: HS/ College

Qualifications for office: Currently holding Pittsburgh School Director, District 2 seat since December 2019 (1st 4 year term), Completed professional development training on School Board Governance with Pennsylvania School Board Association (PSBA) in 2019 and Council of the Great City Schools (CGCS) Student Outcomes Focused Governance Board Officer Cohort from March 2022-October 2022, Worked for youth serving nonprofit organizations working with PPS students, families, community members, and other stakeholders (2015-present), Passion and drive to center the needs of students and their outcomes

Facebook: <https://www.facebook.com/AlliesforDevon/>



DEVON TALIAFERRO

Questions:

Q: What policies or programs do you advocate that would foster a school atmosphere where everyone feels physically, emotionally, and intellectually safe?

A: As I consider the challenges our district still faces, I am constantly considering equitable and inclusive solutions for how to improve academic outcomes for PPS students. It's been proven that students who feel they belong and are safe, honored, and respected have better attendance and engagement in school. We must have practices in place that encourage and support our youth instead of pushing them out using exclusionary discipline. To improve student outcomes, I can continue to advocate for small class sizes, adequate staff, and full-time Service Coordinators and school-based services through the expansion of our Community Schools model.

Q: In what order would you, as a potential school board member, place the following priorities for your district: athletics, core academic programming, extracurricular opportunities (music, art, clubs, etc.), facilities maintenance/expansion, and technology development? Please explain.

A: In order of priority: Core academic programming, Facilities maintenance/expansion, Technology development, Extracurricular opportunities (music, art, clubs, etc.), and Athletics. While I view all of these topics as valuable priorities for the district, the academic success of PPS students is our number 1 priority, as the district is charged to engage students in rigorous teaching and learning. In addition to academics, our district needs well maintained, environmentally safe buildings to support the needs of students and staff. Students should have a well-rounded education including arts, music, athletics, access to technology, and more.

Q: How would you address anticipated shortfalls in school funding over the next few years? Please be specific.

A: With staff expenses being the majority of the budget, I am committed to investing in an equitable budget that will pay fair wages, keep small class

sizes, and allocate funds so each school can have a FT nurse, art teacher, music teacher, librarian, and other essential staff. Public school funding from the state is not enough to keep up with the rising costs; we shouldn't rely on property taxes for education. Charter School Law reforms are needed as 20% of our budget is charter school expenses. While serving on the board, I have worked with our state legislators on solutions to address funding to secure the resources students need to thrive.

School Director Pittsburgh District 4

Democratic/Republican

Yael Silk

Party: Dem,Rep
Campaign Phone: (936) 827-4465

Campaign Email: info@silk4students.com

Campaign Web Site: silk4students.com

Education: Master's in Arts Education

Qualifications for office: I am driven to make PPS work better for our students as a mother, an educator, and a community builder. I sent my kids to PPS schools, and transferred a child out of a PPS school. In my leadership role at Arts Ed Collaborative, I have the perspective that comes from working with diverse school districts across Southwestern Pennsylvania. As a collaborative professional and an organizer with Bend the Arc: Jewish Action Pittsburgh, I know what it takes to connect people, ideas, and resources for positive change.

Facebook: [facebook.com/silk4students](https://www.facebook.com/silk4students)

Twitter: @Silk4Students



Yael Silk

Questions:

Q: What policies or programs do you advocate that would foster a school atmosphere where everyone feels physically, emotionally, and intellectually safe?

A: I will consider school safety proposals based on research rather than fear. Students feel safer when they are seen, appreciated, and celebrated by their peers and school adults. Important steps to achieve this include increasing available support services (e.g., school counselors), investing in school-level community building activities, and reducing police presence inside schools. I will also encourage investment in culturally responsive teaching practices that uplift the diverse identities of our school district community.

School Director Pittsburgh District 6

Democratic

Emma Yourd

Party: Dem

Campaign Email: friendsofemmayourd@gmail.com

Education: Masters of Public Administration, University of Pittsburgh; BA, Economics, Smith College

Qualifications for office: I have served on nonprofit boards in various roles from communications to finance and have an understanding of the responsibility that comes with serving on a board. In my previous role as Grants Manager at a local foundation, I interacted with many nonprofits that provide out-of-school programming for our youth and as a result, have seen first hand both how our schools are serving our children and where there is room for improvement

Facebook: www.facebook.com/yourd4board

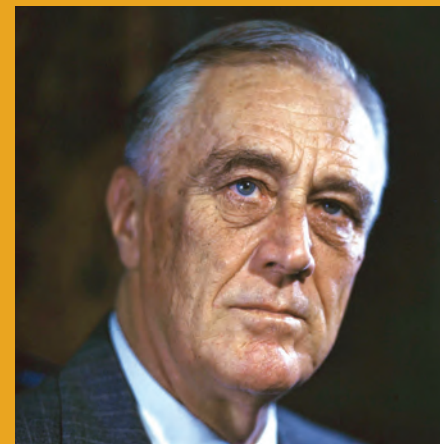


EMMA YOURD

Questions:

Q: What policies or programs do you advocate that would foster a school atmosphere where everyone feels physically, emotionally, and intellectually safe?

A: One of the best things we can do to make our schools feel safer is invest in additional support staff and resources for our students and teachers. Additional support staff in schools would help to address emotional and mental health issues in students before they become a crisis. A number of our schools have opted in to a community schools model, which makes school buildings a community resources for students and parents alike. Expanding that model across the district to our most resilient neighborhoods would also help foster a safer learning environment.



“Nobody will ever deprive the American people of the right to vote except the American people themselves and the only way they could do this is by not voting.”

**— Franklin D. Roosevelt,
Former U.S. President**

School Director Pittsburgh District 8

Democratic

Dwayne Barker

Party: Dem
Campaign Phone: (412) 728-0844
Campaign Email: dbarker4pps@gmail.com
Web Site: dbarker4pps.com
Education: International Academy of Design & Technology with Associates Degree In Specialized Business Computer Information Management
Qualifications for office: Parent Representative on Policy Council for Spring Garden Early Childhood Center, Chairman of the Male/Fatherhood Involvement Committee, Parent and Community Representative for Policy Council, Chairman of PTA/PSCC at Pgh Northview ALA, Take a Father To School Day Committee member, Vice Chairman of PTO/PSCC at Pittsburgh King, Founder and Parent Community Volunteer Coordinator of the Parent Community Volunteer Network at Pittsburgh King Prek – 8th, Strengthening Black Families – National Advisory Committee member for the POISE Foundation, Board of Director of Perry Hilltop Citizens Council
Facebook: Facebook.com/Dwayne Barker for PPS School Board
Twitter: Twitter.com/@Dbarker4PPS



DWAYNE BARKER

Questions:
Q: What policies or programs do you advocate that would foster a school atmosphere where everyone feels physically, emotionally, and intellectually safe?
A: Watching the youth now in days growing up in an education system with school violence and bullying, now having another way of doing it online, has led to loss of life with a higher suicide rate, lifetime disorders with a higher level of depression, lack of education with a higher level of dropouts, lower incomes.
We as the stakeholders need to not only put more safeguards around the children we serve in our schools, but also have our finger on the pulse of what kind of supports the parents and staff need in our schools as well. Collectively we all play important roles in securing positive outcomes for our Future Leaders of tomorrow!
Q: In what order would you, as a potential school board member, place the following priorities for your district: athletics, core academic programming, extracurricular opportunities (music, art, clubs, etc.), facilities maintenance/expansion, and technology development? Please explain.
A: core academic programming would be first on the list. We all know that academics are the priority. 2nd for me would be technology development. I also feel as if technology is the way of the future and we need to get & keep our students on a tech path. 3rd would be extracurricular opportunities. Many of our students have talents that are elevated or gracefully brought out of them with the help/support of the instructors.
4th would have to be athletics and finally. Some of our most gifted athletes need this as a part of their lives so that they can blow off some steam or maybe even feel like the hero in their own story.

5th would be facilities
Q: How would you address anticipated shortfalls in school funding over the next few years? Please be specific.
A: I believe PPS schools are not funded sufficiently. Especially the heavily black and brown populated areas around the city. We also know that even if the schools are getting a nice bit of money, the principles aren't properly educating the staff and the parents on the allocations of the money.
I am currently one of only several Pittsburgh parents serving on the PA Title I State Parent Advisory Council (SPAC) where I shares ideas with the Division of Federal Programs about effective strategies to involve Title I parents to increase student achievement primarily when it comes to the funding.

Magisterial District Judge

Description: Elected for six year terms. Magisterial district judges (MDJs) do not have to be lawyers but are required to pass a qualifying exam. Handle civil cases up to \$12,000; responsible whether serious criminal cases go the Court of Common Pleas; handle preliminary arraignments and hearings; minor criminal offenses, traffic citations and non-traffic ordinance violations. Responsible for setting and accepting bail, except in murder or voluntary manslaughter cases.
Term: 6 years **Base salary:** \$91, 597

Magisterial District Judge 05-02-01

Democratic/Republican

Tara Smith

Biographical Info:
Questions:
Q: What experience do you have that would qualify you to handle the wide variety of cases that come before a Magisterial District Judge?
A: -no response-
Q: The Criminal Justice Task Force (11/16) recommended that Magistrates use the Allegheny County Risk Assessment tool for pretrial release determinations when setting bail. Are you familiar with this tool? Would you use it to determine the need for bail and the value of bail required?
A: -no response-

Never doubt that a small group of thoughtful, committed citizens can change the world: indeed, it's the only thing that ever has.
— Margaret Mead



Magisterial District Judge 05-02-03

Democratic/Republican

Daniel J. Konieczka, Jr.

Party: Dem
Biographical Info:
Campaign website: konieczka4magistrate.com
Education: Juris Doctorate - University of Pittsburgh
Campaign Web Site: konieczka4magistrate.com
Campaign Email: dank-4dj@gmail.com
Qualifications for office: I currently have the honor of serving the communities of Shaler, Etna, Millvale and Reserve as their magisterial district judge. Prior to my election in 2018, I was a practicing attorney for thirty-two years litigating matters in local, state a federal courts.
Facebook: www.facebook.com/DanKon4Magistrate



DANIEL J. KONIECZKA, JR.

Questions:
Q: What experience do you have that would qualify you to handle the wide variety of cases that come before a Magisterial District Judge?
A: I currently have the honor of serving the communities of Shaler, Etna, Millvale and Reserve as their magisterial district judge. Prior to my election in 2018, I was a practicing attorney for thirty-two years litigating matters in local, state a federal courts.
Q: The Criminal Justice Task Force (11/16) recommended that Magistrates use the Allegheny County Risk Assessment tool for pretrial release determinations when setting bail. Are you familiar with this tool? Would you use it to determine the need for bail and the value of bail required?
A: As a current magisterial district judge, I am very familiar with the Risk Assessment tool and utilize it on a regular basis. It is both informative and useful in setting bail.

Magisterial District Judge 05-02-05

Republican

Thomas A. Babinsack

Party: Rep
Biographical Info:

Questions:
Q: What experience do you have that would qualify you to handle the wide variety of cases that come before a Magisterial District Judge?
A: -no response-
Q: The Criminal Justice Task Force (11/16) recommended that Magistrates use the Allegheny County Risk Assessment tool for pretrial release determinations when setting bail. Are you familiar with this tool? Would you use it to determine the need for bail and the value of bail required?
A: -no response-

Democratic

Carolyn Saldari Bengel

Party: Dem
Biographical Info:

Questions:
Q: What experience do you have that would qualify you to handle the wide variety of cases that come before a Magisterial District Judge?
A: - no response -
Q: The Criminal Justice Task Force (11/16) recommended that Magistrates use the Allegheny County Risk Assessment tool for pretrial release determinations when setting bail. Are you familiar with this tool? Would you use it to determine the need for bail and the value of bail required?
A: - no response -

Magisterial District Judge 05-02-02

Republican

Joseph Bellissimo

Party: Rep
Biographical Info:

Questions:
Q: What experience do you have that would qualify you to handle the wide variety of cases that come before a Magisterial District Judge?
A: -no response-
Q: The Criminal Justice Task Force (11/16) recommended that Magistrates use the Allegheny County Risk Assessment tool for pretrial release determinations when setting bail. Are you familiar with this tool? Would you use it to determine the need for bail and the value of bail required?
A: -no response-

Democratic

Giuseppe Rosselli

Party: Dem
Biographical Info:
Campaign Phone: 4128777370
Campaign Email: Rosselli4magistrate@gmail.com
Campaign Web Site: www.Rosselli4Magistrate.com
Education: Earned J.D. from ‘the University of Pittsburgh School of Law 2000
Qualifications for office: Practicing Trial Attorney for past 23 years. Conducted more than 4000 proceedings at the Magisterial Court Level, including every type of matter conducted at the magistrate.
Facebook: Giuseppe Rosselli for Judge
Campaignwebsite: www.Rosselli4Magistrate.com



GIUSEPPE ROSSELLI

Questions:
Q: What experience do you have that would qualify you to handle the wide variety of cases that come before a Magisterial District Judge?
A: I am a practicing attorney. I have tried more than 100 cases to verdict. I have conducted more than 4000 proceedings at the magisterial court level during my 23-year career. I have handled every matter at the Magistrate, including criminal preliminary hearings, civil lawsuits, landlord/tenant disputes, traffic offenses, summary non-traffic offenses, truancy, marriages, and juvenile matters. I am a volunteer adjunct professor at Pitt Law, where I teach trial advocacy and evidence. I am an expert on the rules that govern magistrate hearings.
Q: The Criminal Justice Task Force (11/16) recommended that Magistrates use the Allegheny County Risk Assessment tool for pretrial release determinations when setting bail. Are you familiar with this tool? Would you use it to determine the need for bail and the value of bail required?
A: I have read the CJTF report in its entirety. I am familiar with the ACRA tool. I am also familiar with the use of the tool in Allegheny County, as I have handled thousands of bail proceedings during my career.
I will use the risk assessment tool as part of the process to determine the need for pretrial detention.
There are 2 factors to be considered to determine the need for pretrial detention: 1. Is the accused a flight risk and 2. Is the accused a danger to the community? These decisions require thought and experience as pretrial detention is ripe for discrimination of the poor and marginalized. Magistrates should use all information available, including the Risk Assessment Tool, to make the most informed decision possible.

Magisterial District Judge 05-02-07

Democratic/Republican

Jeffrey L. Herbst

Party: Rep, Dem
Biographical Info:

Questions:
Q: What experience do you have that would qualify you to handle the wide variety of cases that come before a Magisterial District Judge?
A: -no response-
Q: The Criminal Justice Task Force (11/16) recommended that Magistrates use the Allegheny County Risk Assessment tool for pretrial release determinations when setting bail. Are you familiar with this tool? Would you use it to determine the need for bail and the value of bail required?
A: -no response-



Please go out and vote this November. Too many people have died and sacrificed so much for us to have our voice, we have to use it. Get in formation. Use our voices to do something great for our children.”
—Beyoncé, American Singer

Magisterial District Judge 05-03-03

Republican

Michael J. Girardi

Party: Rep
Biographical Info:
Campaign Phone: 7248268358

Education: Juris Doctor, University of Pittsburgh, School of Law; Bachelor of Arts, Eckerd College
Campaignwebsite: www.GirardiForMDJ.com

Qualifications for office: As a law school graduate, practicing attorney, and an adjunct professor of law (Penn State, New Ken), I have the legal experience and qualifications necessary to ensure the knowledgeable, fair, and impartial application of the law. I have previously served the community as both an elected official (Cheswick Borough Council) and appointed official (Allegheny Valley Regional Police Department), and volunteer for many local organizations, including the Rotary Club, Salvation Army, and the Cheswick Borough Rec Board.

Campaign Email: girardiformdj@gmail.com
Campaign Web Site: www.GirardiForMDJ.com
Facebook: www.Facebook.com/VoteMichaelGirardi

Questions:
Q: What experience do you have that would qualify you to handle the wide variety of cases that come before a Magisterial District Judge?

A: I'm a practicing attorney for (nearly 10 years), a graduate of Pitt Law, an admittee of the Pennsylvania Bar, and an adjunct professor of law at Penn State New Ken. The combination of my educational background, professional experience, and classroom exposure has covered nearly all aspects of the law, from contracts to torts, the Constitution to criminal law. I've argued in front of judges in Allegheny, Westmoreland, and Butler Counties, as well as numerous governmental agencies and Administrative Law Judges.

With my professional legal experience, I have developed the skills needed to understand complex factual and legal scenarios, ascertain the veracity of allegations, and interact with both seasoned attorneys and pro se individuals.

Q: The Criminal Justice Task Force (11/16) recommended that Magistrates use the Allegheny County Risk Assessment tool for pretrial release determinations when setting bail. Are you familiar with this tool? Would you use it to determine the need for bail and the value of bail required?

A: The Rules of Criminal Procedure require that a Magisterial District Judge consider all the factors listed in the Rules of Criminal Procedure 523 when determining bail, including, but not limited to, the nature of the charges, the employment status of the defendant, the defendant's residence in the community, and the defendant's previous appearance in compliance with bail requirements. I am familiar with the Allegheny County Risk Assessment tool. I would welcome the use of the ACRA tool, so as to be more informed when considering all the factors under Sec. 523 of PA R. Crim. in determining the need for bail and the value or type required. Justice is better served when more information is used in making a legal decision.



MICHAEL J. GIRARDI

Democratic

Mitchell Karaica

Party: Dem

Questions:
Q: What experience do you have that would qualify you to handle the wide variety of cases that come before a Magisterial District Judge?

A: -no response-
Q: The Criminal Justice Task Force (11/16) recommended that Magistrates use the Allegheny County Risk Assessment tool for pretrial release determinations when setting bail. Are you familiar with this tool? Would you use it to determine the need for bail and the value of bail required?

A: -no response-

Magisterial District Judge 05-03-06

Democratic/Republican

Bruce J. Boni

Party: Rep, Dem
Biographical Info:
Campaign Email: bj-boni@gmail.com

Qualifications for office: practiced law at trial and appellate levels for twenty-five years, including five years on bench
Campaign Phone: (412) 956-7140

Education: Carnegie Mellon undergrad, Pitt Law cum laude

Questions:
Q: What experience do you have that would qualify you to handle the wide variety of cases that come before a Magisterial District Judge?

A: I hold degrees from Carnegie Mellon & Pitt Law, where I graduated cum laude. I have practiced law in Allegheny County at the trial and appellate levels for 25 years, accumulating a vast wealth of legal experience. In my over 5 years on the bench, I have presided over thousands of civil and criminal cases, including the most serious criminal charges (homicide, robbery, burglary, arson, rape). I have honed a proper judicial temperament, while treating all persons with business before the courts with dignity. I strive to remain abreast of developments in the law and conduct my own legal research when necessary. I am passionate about the law and work to ensure all parties have a full and fair opportunity to be heard by an impartial arbiter.

Q: The Criminal Justice Task Force (11/16) recommended that Magistrates use the Allegheny County Risk Assessment tool for pretrial release determinations when setting bail. Are you familiar with this tool? Would you use it to determine the need for bail and the value of bail required?

A: I incorporate the critical information and recommendations from risk assessments in every single one of the thousands of bail determinations I render as a judge. Risk assessments are an invaluable and effective tool that provide data-driven analysis to



BRUCE J. BONI

predict the minimally restrictive bail conditions that should nevertheless ensure likelihood that 1) the defendant will appear at all future court proceedings, and 2) the defendant will not re-offend during the pendency of the case. This tool has successfully contributed to a responsible reduction in pre-trial detention, while allowing defendants to remain in the community with appropriate release conditions that adequately protect the safety of

Magisterial District Judge 05-02-27

Democratic

Nina Ricciardi

Party: Dem
Biographical Info:
Campaignwebsite: www.ricciardiforjudge.com
Campaign Email: info@ricciardiforjudge.com
Campaign Web Site: www.ricciardiforjudge.com
Facebook: www.facebook.com/ricciardiforjudge
Twitter: twitter.com/ninaforjudge
Education: J.D. University of Pittsburgh, School of Law; B.A., Politics, Saint Vincent College

Questions:
Q: What experience do you have that would qualify you to handle the wide variety of cases that come before a Magisterial District Judge?

A: My educational background and work experience has prepared me to fulfill the duties of a Magisterial District Judge. I obtained my Bachelor of Arts Degree from Saint Vincent College where I received the Law Scholar Award, following which, I obtained my law degree from University of Pittsburgh, School of Law.

I gained valuable and diverse legal experience working in the courts, as an intern for the late Honorable Max Baer, former PA Supreme Court Justice and recently working as a law clerk for Judge Wrenna Watson in the criminal division of the Court of Common Pleas. These cumulative experiences equipped me with the knowledge and skill set necessary to faithfully execute the role of Magisterial District Judge.

Q: The Criminal Justice Task Force (11/16) recommended that Magistrates use the Allegheny County Risk Assessment tool for pretrial release determinations when setting bail. Are you familiar with this tool? Would you use it to determine the need for bail and the value of bail required?

A: Yes, I am familiar with the Allegheny County Risk Assessment tool and I intend to utilize every resource at my disposal to address the too-frequent use of cash bail while setting bond.

My goal is to protect one's safety, improve the quality of life in our neighborhoods, and to guarantee equity in our judicial system, as the scales of justice must be balanced for everyone.

"The ballot is stronger than the bullet."

-Abraham Lincoln, Former U.S. President

Magisterial District Judge 05-02-31

Democratic

Kate Lovelace

Party: Dem
Biographical Info:
Campaign Phone: (412) 567-7761

Campaign Web Site:
www.kateformagistrate.com

Campaign Email:
kate@kateformagistrate.com

Education: J.D. University of Denver, M.P.M. Carnegie Mellon University, B.A. University of Pittsburgh

Qualifications for office: 18 years as an attorney and advocate representing the most at-risk members of our community in Criminal, Juvenile, Truancy, PFA, Family, Dependency, Mental Health Civil Commitments, Bail and Detainers, Traffic, Non-traffic, School cases.

Facebook: <https://www.facebook.com/profile.php?id=100090465360715>
Twitter: @katelovelace412



KATE LOVELACE

Questions:

Q: What experience do you have that would qualify you to handle the wide variety of cases that come before a Magisterial District Judge?

A: For 18 years I've been an attorney and advocate for our most vulnerable communities. I was a public defender, trained by some of the best public defenders, who are now sitting judges. I see the way they consider context and exercise compassion in their courtrooms and I believe if more people with our backgrounds and experiences in court ran for office, perhaps we will see more justice. I think it's incredibly important that your Magistrate have experience standing up for people on their worst day. I understand the complexities both legally and practically of bail, detainers, burdens of proof, and diversionary programs. These are nuanced areas of law that, if misunderstood, contribute to the incarceration and overpolicing epidemics.

Q: The Criminal Justice Task Force (11/16) recommended that Magistrates use the Allegheny County Risk Assessment tool for pretrial release determinations when setting bail. Are you familiar with this tool? Would you use it to determine the need for bail and the value of bail required?

A: I'm very familiar with this tool and there's no financial value that these risk assessments would validate for me as a Magistrate. However, in the last 15 years, I've seen those tools become MUCH more appropriate. Pretrial services is an ancillary office of the Criminal Court of Common Pleas. Those screening tools allow a Magistrate to understand if someone is unlikely to appear for court or has violated bond conditions previously. However, I understand the laws of pretrial incarceration and bail and it should be used extremely sparingly. There are so many alternatives to bail and certain words that describe certain types of bail like unsecured, nominal, non-monetary, percentage, etc. These words matter and are massively underutilized.

Republican

Anthony Vaccarello

Party: Rep
Biographical Info:

Questions:

Q: What experience do you have that would qualify you to handle the wide variety of cases that come before a Magisterial District Judge?

A: -no response-

Q: The Criminal Justice Task Force (11/16) recommended that Magistrates use the Allegheny County Risk Assessment tool for pretrial release determinations when setting bail. Are you familiar with this tool? Would you use it to determine the need for bail and the value of bail required?

A: -no response-

Magisterial District Judge 05-02-12

Republican

Matt Brungo

Party: Rep
Biographical Info:

Questions:

Q: What experience do you have that would qualify you to handle the wide variety of cases that come before a Magisterial District Judge?

A: -no response-

Q: The Criminal Justice Task Force (11/16) recommended that Magistrates use the Allegheny County Risk Assessment tool for pretrial release determinations when setting bail. Are you familiar with this tool? Would you use it to determine the need for bail and the value of bail required?

Democratic

Eric Fischer

Party: Dem
Biographical Info:
Campaign website: www.fischerforjudge.com
Campaign Phone: (412) 913-1310

Campaign Web Site:
www.fischerforjudge.com

Education: JD, University of Pittsburgh; BA, University of Florida

Qualifications for office: 34 years as an attorney including 13 years in the Allegheny County District Attorney's Office as a member of the Child Sex Assault Unit and as the Supervisor for the Pre Trial and ARD Units; 21 years of experience as a litigator in civil and criminal courts throughout the Commonwealth; Practiced in all divisions of Common Pleas Court; Tried thousands of preliminary hearings and bail hearings as a prosecutor and defense attorney; Worked with police departments on drafting both search and arrest warrants.



ERIC FISCHER

Questions:

Q: What experience do you have that would qualify you to handle the wide variety of cases that come before a Magisterial District Judge?

A: As an attorney for 34 years, I have tried every type of case that would come before a Magistrate. My experience in the DA's Office gives me a unique ability to work with police, prosecutors and defense attorneys to craft outcomes which protect society and address the rehabilitative needs of defendants. My work as a civil attorney allows me to fairly and effectively render decisions which allow the parties to resolve their disputes. Through my work with kids and as a father and grandfather, I understand when punishment is needed and second chances and rehabilitation are appropriate.

Q: The Criminal Justice Task Force (11/16) recommended that Magistrates use the Allegheny County Risk Assessment tool for pretrial release determinations when setting bail. Are you familiar with this tool? Would you use it to determine the need for bail and the value of bail required?

A: I have read and am familiar with the 2016, 2018 and 2019 Univ. of Pittsburgh Criminal Justice Task Force reports as well as the Allegheny County Risk Assessment tool for pretrial release determinations. I would use the Assessment tool along with taking into consideration the opinions of the police, DAs, defense attorneys, victims and other interested parties to determine the need and value of bail. I believe that pretrial incarceration should be avoided except where necessary to preserve public safety or to ensure the defendant's appearance at subsequent proceedings. I know the effects of needless incarceration on the accused and their families as well as on taxpayers who pay increased taxes. I believe in rehabilitation where appropriate.

“Here’s the problem: while some folks are frustrated and tuned out and staying home on election day, trust me other folks are showing up. Democracy continues with or without you.”



Magisterial District Judge 05-02-10

Democratic

Iren Evans

Party: Dem
Biographical Info:
Campaign Web Site: vo-teirenevans.com
Campaign Email: Irenev-ans412@gmail.com
Education: Edinboro Uni-versity of Pennsylvania Sociology B.A
Qualifications for office: Passed Certification Ex-amination required by the Constitution of Pennsylva-nia



IREN EVANS

Questions:
Q: What experience do you have that would qual-ify you to handle the wide variety of cases that come before a Magisterial District Judge?
A: During my working years, I have worked in direct-ly with mental health clients , school truancy aversion, drug and alcohol, mental health crisis via Western Psy-chiatric - Resolve and police. I have empowered numer-ous people to obtain PFA's and how to fight an unjust evictions. I have the trust and responsibility in making life saving decisions in regards to mental health. My experience has prepared me to objectively view any situation that may present to the court.
In each instance I have have been a part of improving the lives of others and providing direction. Currently I feel as if I have acquired the experience to make deci-sions that are reasonable and appropriate that protect the lives of people and those they encounter.
Q: The Criminal Justice Task Force (11/16) recom-mended that Magistrates use the Allegheny County Risk Assessment tool for pretrial release deter-minations when setting bail. Are you famil-iar with this tool? Would you use it to determine the need for bail and the value of bail required?
A: I feel as if the need for bail in general should not be a penalty on those whom are financially unable. Bail should be tool to compel a person to present to court and to keep the community and alleged victims safe. I am in-terested and willing to consider tools that aid in making bail reasonable without severe risk to the public.

Magisterial District Judge 05-02-08

Democratic/Republican

Lisa Caulfield

Party: Rep, Dem
Biographical Info:
Campaign Phone: (412) 427-5984
Campaign Web Site: lisacaulfield.com
Campaign Email: lisacaulfield2023@gmail.com
Education: BA Philosophy Chatham College; JD Univer-sity of Pittsburgh School of Law
Qualifications for office: I have over 20 years experi-ence as a practicing attorney with the office of the Public Defender. I am engaged in the community volunteering with the school district and community events. I am com-

mitted to diversity, equality, and inclusion. I serve on the Bar Association Committee for Diversity and Inclusion, and I successfully lobbied the Woodland Hills School Board to pass a comprehen-sive antidiscrimination and inclusion policy.
Facebook: Lisa Caulfield for MDJ

Questions:
Q: What experience do you have that would qualify you to handle the wide variety of cases that come before a Magisterial District Judge?
A: As a Public Defender, I have represented over 10,000 people charged with everything from traffic violations to low level misdemeanors to felonies to homicides. I also have experience with family court and mental health commitment cases. My over 20 years of practicing law in district court and trial court plus my education including CLE and keeping current with case law qualifies me to be an excellent Magisterial District Judge. Also, being a Pub-lic Defender has given me the ability to work with many personalities, as I interact with my clients and their fam-ilies, lawyers, judges, the police, staff, and witnesses. I am familiar with services and have helped many individuals connect with the services they desire - MH, drug, GED, and more.
Q: The Criminal Justice Task Force (11/16) recom-mended that Magistrates use the Allegheny County Risk Assessment tool for pretrial release deter-minations when setting bail. Are you familiar with this tool? Would you use it to determine the need for bail and the value of bail required?
A: I am familiar with the risk assessment tool. Certain criteria is used - such as criminal history and failures to appear - to make a determination on whether a person should be released ROR, after posting cash, or not released and what conditions to be imposed if any. If elected, I would certainly review the recommendations made, but it would not be the only thing I would review. People are not numbers and past is not always predictive of the future. Each person facing charges should be treated individually, and additional information would be relevant in making a determination. Allowing a person, presumed innocent, to sit in jail awaiting trial because they cannot afford to post a cash bail is unfair. And it is not equal justice for all.



LISA CAULFIELD

Magisterial District Judge 05-03-14

Democratic/Republican

Richard King

Party: Dem, Rep
Biographical Info:
Qualifications for office: 30 years as an MDJ
Questions:
Q: What experience do you have that would qualify you to handle the wide variety of cases that come before a Magisterial District Judge?
A: My 30 years of experience.
Q: The Criminal Justice Task Force (11/16) recom-mended that Magistrates use the Allegheny Coun-ty Risk Assessment tool for pretrial release deter-minations when setting bail. Are you famil-iar with this tool? Would you use it to determine the need for bail and the value of bail required?
A: We have had this for over 10 years and I was one of the persons to get it established here.

Magisterial District Judge 05-02-23

Democratic/Republican

Jack Kobistek

Party: Rep, Dem
Biographical Info:
Education: UnderGrad - Business/Finance Robert Morris University, Gradu-ate Degrees: Carnegie Mel-lon University and Robert Morris University
Qualifications for of-fice: Current Magisterial District Judge, certified by State of Pennsylvania



JACK KOBISTEK

Questions:
Q: What experience do you have that would qualify you to handle the wide variety of cases that come before a Magisterial District Judge?
A: Over the past five years, I have been involved with well over 20,000 court cases in a variety of legal areas. With years of front-line community involvement, and two graduate degrees, including one from the Carn-egie Mellon University Heinz College of Public Policy and Management, I understand there is a direct con-nection between strong communities and effective and fair justice. Also, my strong research skills enable me to properly prepare and administer justice for the diverse case load of an MDJ. My life experiences and diversified occupational history (including eight years as a may-or) have provided me with a wide-variety of skills and abilities to administer fair and balanced justice that re-spects all parties involved in the process.
Q: The Criminal Justice Task Force (11/16) recom-mended that Magistrates use the Allegheny County Risk Assessment tool for pretrial release deter-minations when setting bail. Are you famil-iar with this tool? Would you use it to determine the need for bail and the value of bail required?
A: I believe in using all tools available to MDJ's, includ-ing pretrial assessments and recommendations. I have worked very closely with the people at Pretrial Services to provide support services to many defendants. I have also worked closely with groups such as Justice Related Services (JRS) to assist defendants with mental health care and addiction issues. I have partnered with many community organizations, Church leaders, and nonprof-its to deliver unique options in alternative adjudication and support for the complex issues impacting many of the defendants. At the same time, I realize a defendant has to be truly engaged in the process if any progress is to be made.

“Don’t boo—
vote.”
— Barack
Obama, Former
U.S. President



Magisterial District Judge 05-02-15

Democratic/Republican

Patrick D. Campbell

Party: Rep, Dem
Biographical Info:

Questions:
Q: What experience do you have that would qualify you to handle the wide variety of cases that come before a Magisterial District Judge?

A: -no response-

Q: The Criminal Justice Task Force (11/16) recommended that Magistrates use the Allegheny County Risk Assessment tool for pretrial release determinations when setting bail. Are you familiar with this tool? Would you use it to determine the need for bail and the value of bail required?

A: -no response-

Magisterial District Judge 05-02-35

Democratic

Dan Butler

Party: Dem
Biographical Info:

Questions:
Q: What experience do you have that would qualify you to handle the wide variety of cases that come before a Magisterial District Judge?

A: -no response-

Q: The Criminal Justice Task Force (11/16) recommended that Magistrates use the Allegheny County Risk Assessment tool for pretrial release determinations when setting bail. Are you familiar with this tool? Would you use it to determine the need for bail and the value of bail required?

A: -no response-

Magisterial District Judge 05-02-43

Democratic/Republican

Carla Swearingen-Batch

Party: Dem,Rep
Biographical Info:

Questions:
Q: What experience do you have that would qualify you to handle the wide variety of cases that come before a Magisterial District Judge?

A: -no response-

Q: The Criminal Justice Task Force (11/16) recommended that Magistrates use the Allegheny County Risk Assessment tool for pretrial release determinations when setting bail. Are you familiar with this tool? Would you use it to determine the need for bail and the value of bail required?

A: -no response-

“We do not have government by the majority. We have government by the majority who participate.”

**— Thomas Jefferson, Former
U.S. President and Founding
Father of the U.S.**



Special Election Questions

Allegheny County Proposed Ordinance

Shall Article III, Subsection 7(a) of Allegheny County’s Home Rules Charter be amended to provide Council Members with an annual salary of \$10,939, to be increased no more than 5 percent every 5 years?

Explanation Of Ballot Question

If the majority of voters vote “yes” to this proposal, County Council members shall receive a salary instead of a per-meeting stipend payment. This change is intended to recognize the council members’ work extends outside regular meetings. This is not an increase in pay. An adjustment in the stipend, raising it from \$9,000 annually to \$10,939 was made earlier this year. The total annual payment a council member could receive annually would remain at \$10,939. This amount could be increased no more than 5 percent every 5 years.

Yes – For the Measure
No - Against the Measure

Ballot Questions (Monroeville Only)

Shall Article VII, Section 701, titled Municipal Manager, of the Monroeville Home Rule Charter be amended by increasing the management experience required, modifying qualifications required, and removing the residency requirement for individuals hired into the position of Municipal Manager?

Explanation Of Ballot Question

If the majority of voters vote “yes” to the Charter Amendment, in order to attract more qualified applicants for the position of Municipal Manager, the Municipality of Monroeville will update the qualifications required of candidates for Municipal Manager. The job description will increase the amount of experience required in a similar position from 5 to 8 years, with 5 years required as a municipal manager. A master’s degree will no longer be “preferred,” but would be “desirable.” Language forbidding waiver of the listed prerequisites for hire will be deleted. The requirement that the manager live in Monroeville will be eliminated.

Yes - For the Measure
No - Against the Measure

Ballot Questions (Mt. Lebanon Only)

Shall Section 309, titled Filling of Vacancies, of the Mt. Lebanon Home Rule Charter be amended to require that vacancies in the office of Commissioner be filled by the appointment of a qualified candidate residing in the same ward until the next Municipal Election, when a successor would be elected?
If the original term of the vacated office expires after the next municipal election, the appointment would only carry through until the next municipal election.

Explanation Of Ballot Question

If the majority of voters vote “yes” to this referendum, Mt. Lebanon shall change appointment and election processes governing the filling of mid-term vacancies in the office of Commissioner. This change will give individuals appointed to fill vacancies an opportunity to serve for a meaningful amount of time and will move elections to fill vacancies into the already-established 2-year Municipal Election cycle. The change will eliminate confusion and better serve voters.

Yes - For the Measure
No - Against the Measure

Ballot Questions (White Deer Township Only)

West Deer Township Proposed Home Rule Charter Amendment 1
Shall Section C-1149 of the West Deer Township Home Rule Charter titled Audits be amended by providing for independent audits of Township accounts by a certified public accounting firm duly licensed in Pennsylvania? The current Charter requires audits be performed by elected auditors.

Explanation Of Ballot Question 1

West Deer Township’s Home Rule Charter requires that elected auditors perform annual audits of its finances. In practice, the Township has hired an outside, licensed certified public accountant (CPA) firm to perform this task for 20 years. The Township’s elected officials believe that residents are best served by using an unaffiliated, fully licensed CPA firm to audit Township finances and assure that Township financial practices meet the requirements of the Pennsylvania Department of Community and Economic Development.

Yes - For the Measure
No - Against the Measure

Race: West Deer Township Proposed Home Rule Charter Amendment 2
Shall Section C-1197 of the West Deer Township Home Rule Charter be amended to authorize a Fire Tax not to exceed one-half (0.5) mill, the equivalent of \$50 per each \$100,000 of assessed value, on all taxable real estate? Currently the Charter authorizes a fire protection fee of \$40 per household and \$100 per business.

Explanation Of Ballot Question 2

The Township seeks to raise additional funds for fire protection services to meet its responsibilities for public health and safety. The current fire protection fees were set in 2006. Costs have increased, and the proposed Fire Tax would increase funding. As an example, for a home assessed by the Township at a value of \$250,000, the annual Fire Tax would be \$125. This amendment to the charter will abolish the current Fire Protection Fee.If the majority of voters vote “yes” to this question, the Fire Tax shall be implemented to replace the Fire Protection Fee.

Yes - For the Measure
No - Against the Measure

Retention of Judges of the Court of Common Pleas

Allegheny County Court of Common Pleas Judicial Retention
The Allegheny County Bar Association’s non-partisan ratings and information for incumbent judges are available at <https://www.judicialvote2023.org/retention-election-ratings> Official Judicial Retention According to www.pacourts.us: Retention is a nonpolitical method of reelecting Pennsylvania judges and is intended to be politically neutral and does not require judges to engage in campaigning against other candidates. Retention is specifically designed to keep judges out of the political fray while at the same time holding them accountable to the voters based on their overall records and performance in office. The intent is to provide a fair and nonpartisan way for the public to judge its judges. The names of the candidates are listed at the end of the ballot, apart from other offices. No political affiliation is listed for retention candidates.

Election 1 - Shall Eleanor L. Bush be retained for an additional term as Judge of the Court of Common Pleas, 5th Judicial District, Allegheny County?

Election 2 - Shall Paul E. Cozza be retained for an additional term as Judge of the Court of Common Pleas, 5th Judicial District, Allegheny County?

Election 3 - Shall Lawrence Joseph O’Toole be retained for an additional term as Judge of the Court of Common Pleas, 5th Judicial District, Allegheny County?

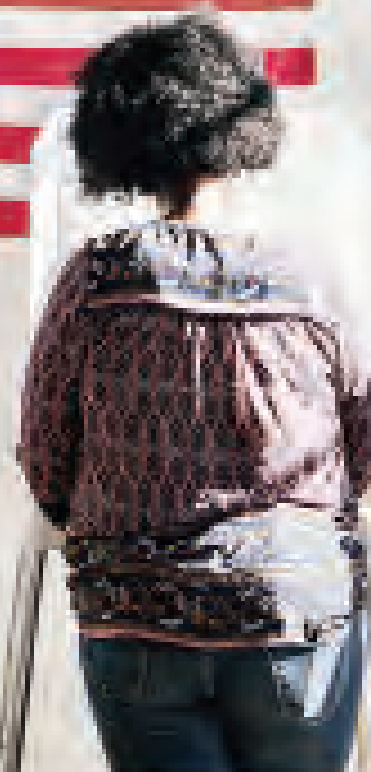
Election 4 - Shall Jill E. Rangos be retained for an additional term as Judge of the Court of Common Pleas, 5th Judicial District, Allegheny County?

Election 5 – Shall Jennifer Satler be retained for an additional term as Judge of the Court of Common Pleas, 5th Judicial District, Allegheny County?

Election 6 - Shall Christine Ward be retained for an additional term as Judge of the Court of Common Pleas, 5th Judicial District, Allegheny County?

Making your voice heard is

★
UP TO YOU



VOTE 2023

www.pavoterservices.pa.gov